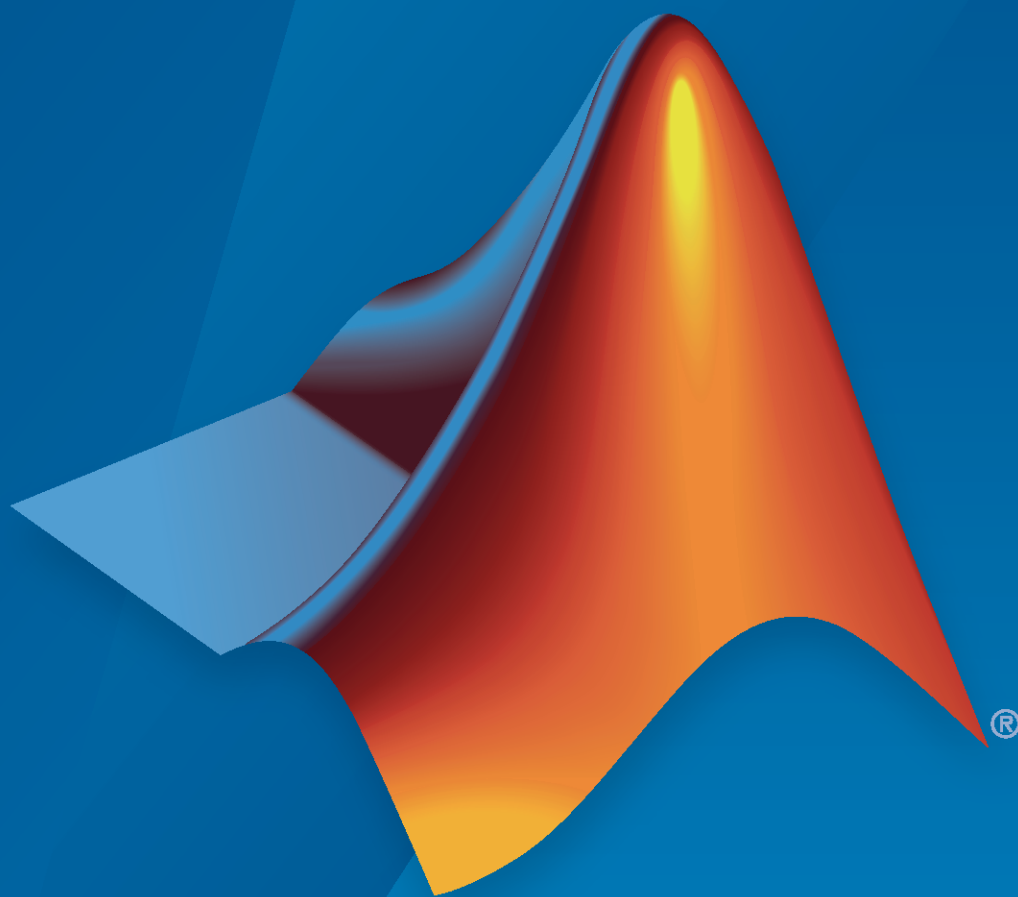


Polyspace® Bug Finder™

Getting Started Guide



How to Contact MathWorks



Latest news: www.mathworks.com
Sales and services: www.mathworks.com/sales_and_services
User community: www.mathworks.com/matlabcentral
Technical support: www.mathworks.com/support/contact_us



Phone: 508-647-7000



The MathWorks, Inc.
1 Apple Hill Drive
Natick, MA 01760-2098

Polyspace® Bug Finder™ Getting Started Guide

© COPYRIGHT 2013–2021 by The MathWorks, Inc.

The software described in this document is furnished under a license agreement. The software may be used or copied only under the terms of the license agreement. No part of this manual may be photocopied or reproduced in any form without prior written consent from The MathWorks, Inc.

FEDERAL ACQUISITION: This provision applies to all acquisitions of the Program and Documentation by, for, or through the federal government of the United States. By accepting delivery of the Program or Documentation, the government hereby agrees that this software or documentation qualifies as commercial computer software or commercial computer software documentation as such terms are used or defined in FAR 12.212, DFARS Part 227.72, and DFARS 252.227-7014. Accordingly, the terms and conditions of this Agreement and only those rights specified in this Agreement, shall pertain to and govern the use, modification, reproduction, release, performance, display, and disclosure of the Program and Documentation by the federal government (or other entity acquiring for or through the federal government) and shall supersede any conflicting contractual terms or conditions. If this License fails to meet the government's needs or is inconsistent in any respect with federal procurement law, the government agrees to return the Program and Documentation, unused, to The MathWorks, Inc.

Trademarks

MATLAB and Simulink are registered trademarks of The MathWorks, Inc. See www.mathworks.com/trademarks for a list of additional trademarks. Other product or brand names may be trademarks or registered trademarks of their respective holders.

Patents

MathWorks products are protected by one or more U.S. patents. Please see www.mathworks.com/patents for more information.

Revision History

September 2013	Online Only	New for Version 1.0 (Release 2013b)
March 2014	Online Only	Revised for Version 1.1 (Release 2014a)
October 2014	Online Only	Revised for Version 1.2 (Release 2014b)
March 2015	Online Only	Revised for Version 1.3 (Release 2015a)
September 2015	Online Only	Revised for Version 2.0 (Release 2015b)
October 2015	Online Only	Rereleased for Version 1.3.1 (Release 2015aSP1)
March 2016	Online Only	Revised for Version 2.1 (Release 2016a)
September 2016	Online Only	Revised for Version 2.2 (Release 2016b)
March 2017	Online Only	Revised for Version 2.3 (Release 2017a)
September 2017	Online Only	Revised for Version 2.4 (Release 2017b)
March 2018	Online Only	Revised for Version 2.5 (Release 2018a)
September 2018	Online Only	Revised for Version 2.6 (Release 2018b)
March 2019	Online Only	Revised for Version 3.0 (Release 2019a)
September 2019	Online Only	Revised for Version 3.1 (Release 2019b)
March 2020	Online Only	Revised for Version 3.2 (Release 2020a)
September 2020	Online Only	Revised for Version 3.3 (Release 2020b)
March 2021	Online Only	Revised for Version 3.4 (Release 2021a)

About Polyspace Bug Finder

1

Polyspace Bug Finder Product Description	1-2
---	------------

Install and Configure Polyspace Bug Finder

2

Install Polyspace Desktop Products	2-2
Workflow	2-2
Product Installation	2-3
Install Polyspace with Other MathWorks Products	2-4
Configure License Borrowing	2-5
Update Polyspace Products	2-6
Install Polyspace Desktop Plugin for Eclipse	2-9
Install Polyspace Plugin	2-9
Uninstall Polyspace Plugin	2-10
Install Products for Submitting Polyspace Analysis from Desktops to Remote Server	2-12
Choose Between Local and Remote Analysis	2-12
Requirements for Remote Analysis	2-12
Configure and Start Server	2-15
Configure Client	2-18
Offload Polyspace Analysis from Desktop to Server	2-19
Submit Analysis Jobs from Multiple Releases of Polyspace	2-20
Set Up Polyspace Metrics	2-23
Requirements for Polyspace Metrics	2-23
Configure and Start Polyspace Metrics Server	2-24
Configure Client Side	2-25
Configure Web Server for HTTPS	2-26
Change Web Server Port Number for Metrics Server	2-27
Compiler Requirements	2-29

Get Started with Polyspace Bug Finder

3

Run Polyspace Bug Finder on Desktop	3-2
Run Polyspace in User Interface	3-3
Run Polyspace on Windows or Linux Command Line	3-5
Run Polyspace in Eclipse	3-5
Run Polyspace in MATLAB	3-6
Review Polyspace Bug Finder Results in Polyspace User Interface	3-8
Interpret Results	3-8
Address Results Through Bug Fix or Comments	3-10
Manage Results	3-10
Send Bug Finder Analysis from Desktop to Locally Hosted Server	3-12
Client-Server Workflow for Running Analysis	3-12
Prerequisites	3-13
Configure and Start Server	3-13
Configure Client	3-15
Send Analysis from Client to Server	3-16

Deploy Polyspace Bug Finder

4

Polyspace Products for Code Analysis and Verification	4-2
Using Polyspace Products in Software Development	4-2
Coordinating Pre-Submit and Post-Submit Usage of Polyspace	4-4
Polyspace Products for Ada Code	4-4
Choose Between Polyspace Bug Finder and Polyspace Code Prover	4-5
How Bug Finder and Code Prover Complement Each Other	4-5
Workflow Using Both Bug Finder and Code Prover	4-10

About Polyspace Bug Finder

Polyspace Bug Finder Product Description

Identify software bugs via static analysis

Polyspace Bug Finder identifies run-time errors, concurrency issues, security vulnerabilities, and other defects in C and C++ embedded software. Using static analysis, including semantic analysis, Polyspace Bug Finder analyzes software control, data flow, and interprocedural behavior. By highlighting defects as soon as they are detected, it lets you triage and fix bugs early in the development process.

Polyspace Bug Finder checks compliance with coding rule standards such as MISRA C®, MISRA C++, JSF++, CERT® C, CERT C++, and custom naming conventions. It generates reports consisting of bugs found, code-rule violations, and code quality metrics, including cyclomatic complexity. Polyspace Bug Finder can be used with the Eclipse™ IDE to analyze code on your desktop.

For automatically generated code, Polyspace results can be traced back to Simulink® models and dSPACE® TargetLink® blocks.

Support for industry standards is available through IEC Certification Kit (for ISO 26262 and IEC 61508) and DO Qualification Kit (for DO-178).

Install and Configure Polyspace Bug Finder

Install Polyspace Desktop Products

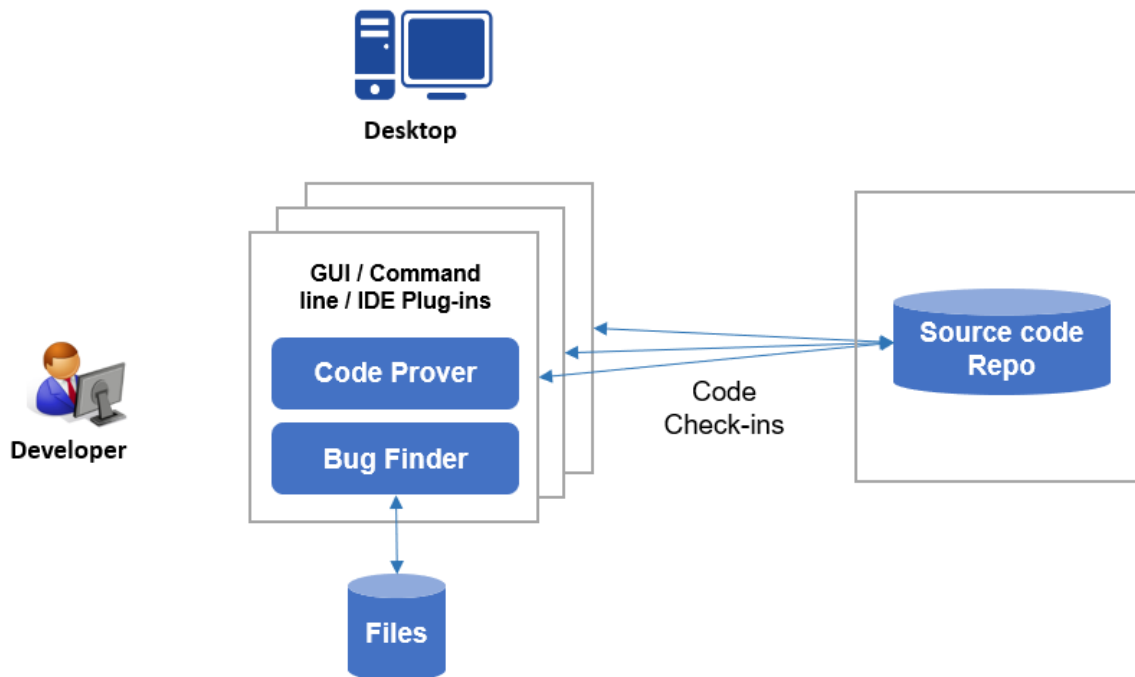
Polyspace checks C/C++ code for bugs, run-time errors, coding standard violations, and other issues by using static analysis. With the desktop products, Polyspace Bug Finder and Polyspace Code Prover, you can perform the checks on individual desktops prior to code submission.

For an overview of all Polyspace products, see “Polyspace Products for Code Analysis and Verification” on page 4-2.

Workflow

Using the Polyspace desktop products, individual developers can check their code for bugs and run-time errors during development.

For uniform standards across a project or team, all developers in the project or team can use a predefined set of checks. Developers can qualify their code for submission based on these predefined checks. After code submission to a shared repository, a more extensive post-submission analysis can run on a server by using the Polyspace server products.



The workflow consists of these steps:

- Running Polyspace analysis:

During development, individual developers start the analysis from their IDEs by using scripts or from the user interface of the desktop products.

For code generated from:

- Simulink models, you can start the analysis directly from Simulink after code generation.
- MATLAB® code, you can start the analysis directly in the MATLAB Coder App after code generation.

To save processing power on the developer's desktop, you can offload the analysis to a server. After analysis, the results are downloaded to the desktop for review.

- Reviewing Polyspace results:

After analysis, developers review the results (bugs, run-time errors, coding standard violations, and so on) in the desktop product user interface.

If using Eclipse or an IDE based on Eclipse, developers can review the results directly in the IDE.

These steps describe a workflow prior to code submission. After code submission, a build automation tool can run a Polyspace analysis on a server. The tool can also upload the analysis results to a web browser for collaborative review by developers or quality engineers. See “Install Polyspace Server and Access Products” (Polyspace Bug Finder Server).

Product Installation

For this workflow, you must install the following products on individual desktops.

Polyspace Products to Run Analysis

Install Polyspace Bug Finder or Polyspace Code Prover to run the analysis.

Installation

Run the MathWorks® installer. Choose a license for Polyspace desktop products. You can get the installer and license by purchasing the product or requesting a trial. For detailed instructions, see “Installation and Licensing”.

To install the products non-interactively or silently at the command line, see “Install Noninteractively”.

You require Polyspace Bug Finder to install Polyspace Code Prover.

Installation Folder

A default installation folder is used based on your operating system and the release version. During installation, you can change this default folder if needed.

For instance, the default installation folder for release R2021a is listed here.

Operating System	Default Installation Folder
Windows®	C:\Program Files\Polyspace\R2021a

Operating System	Default Installation Folder
Linux® (most distributions)	/usr/local/Polyspace/R2021a
Mac	/Applications/Polyspace/R2021a

Post-Installation Steps

After you install a Polyspace desktop product, you can open the Polyspace user interface or run command-line executables. You can start an analysis in the user interface or from the Windows or Linux command line.

To start the analysis from other environments, perform these post-installation steps:

- To run Polyspace from Eclipse or an IDE based on Eclipse, install the Polyspace plugin. See “Install Polyspace Desktop Plugin for Eclipse” on page 2-9.
- To run Polyspace with MATLAB scripts, install MATLAB. Then, perform a one-time setup to link your Polyspace and MATLAB installations. See “Integrate Polyspace with MATLAB and Simulink”.
- To run Polyspace from Simulink, install MATLAB, Simulink, and Embedded Coder®. Then, perform a one-time setup to link your Polyspace and Simulink installations. See “Integrate Polyspace with MATLAB and Simulink”.
- To run Polyspace from the MATLAB Coder App, install MATLAB and Embedded Coder. Then, perform a one-time setup to link your Polyspace and MATLAB installations. See “Integrate Polyspace with MATLAB and Simulink”.
- To offload the analysis to a server, install Polyspace Bug Finder only on your desktop. On the server side, install the Polyspace server products and MATLAB Parallel Server™ to handle analysis jobs from multiple desktops. See “Install Products for Submitting Polyspace Analysis from Desktops to Remote Server” on page 2-12.

Polyspace Products to Review Results

The Polyspace Bug Finder or Polyspace Code Prover installation is sufficient to review the results.

You can review Bug Finder and Code Prover results with only Bug Finder desktop. For instance, if you offload the analysis to a server and only review the downloaded analysis results on your desktop, you require Bug Finder only.

In Eclipse or IDEs based on Eclipse, if you install the Polyspace plugin, you can see the results directly in the IDE.

Install Polyspace with Other MathWorks Products

To install Polyspace with other MathWorks products such as MATLAB, run the MathWorks installer twice.

- In the first run, choose the license that corresponds to the other MathWorks products, such as MATLAB, Simulink, or Embedded Coder.

- In the second run, choose the license that corresponds to the Polyspace products.

In this workflow, products such as MATLAB and Simulink are installed in a different root folder than the Polyspace products. You can link the two installations and use MATLAB scripts to run Polyspace. See “Integrate Polyspace with MATLAB and Simulink”.

If you install the Polyspace desktop and server products, you also have to run the installer twice with separate licenses. The desktop and server products are installed in separate root folders. For instance, in Windows, the default root folders for an R2021a installation are:

- Polyspace desktop products: C:\Program Files\Polyspace\R2021a.

This folder contains executables to run analysis with the products, Polyspace Bug Finder and Polyspace Code Prover.

- Polyspace server products: C:\Program Files\Polyspace Server\R2021a.

This folder contains executables to run analysis with the products, Polyspace Bug Finder Server™ and Polyspace Code Prover Server.

Configure License Borrowing

If your Polyspace product uses a license that requires a license manager, for example a Commercial Concurrent license, you can enable license borrowing and borrow a license.

Borrow a license for up to 720 hours (30 days) to continue using your Polyspace product even after you disconnect your machine from the license manager server.

Licenses that support borrowing include the keyword `BORROW` on the `INCREMENT` lines for products, for example:

```
INCREMENT Polyspace_BF MLM 40 01-jan-000 5 BORROW=720 \
  AE3FC254020DE6A3C24A
```

You must be an administrator to enable license borrowing. See “Enable License Borrowing”.

Borrow a Polyspace License

Note This workflow applies to R2019a and later releases. For R2018b and earlier releases, see “Borrow Licenses”.

To borrow a license, use the `lmutil` binary that is available with the license manager installation.

The binary is in the same folder as the `lmgrd` and `MLM` binaries, for instance `installFolder\win64\etc`, where `installFolder` is the license manager installation folder. If you do not know the location of this folder contact your Polyspace license administrator.

To borrow a license:

- 1 Copy the `lmutil` binary from the license server machine to the machine from which you want to borrow a license.

- 2 Run the following command by using this format to specify the borrow period end date, and optionally, the end time:

```
lmutil lmborrow MLM dd-Mmm-YYYY hh:mm
```

For instance, to borrow a license until January 20, 2021 a 1pm, enter:

```
lmutil lmborrow MLM 20-Jan-2021 13:00
```

- 3 Run the product whose license you want to borrow. For instance, use the Polyspace Bug Finder desktop product to analyze a small source file.

Run this command to check the borrow status of your license:

```
lmutil lmborrow -status
```

- 4 Disconnect your machine from the network and continue using your Polyspace product.

So that you do not borrow licenses for other products, after step 3, run this command:

```
lmutil lmborrow -clear
```

Return Polyspace License

To return your borrowed license before the end of the borrow period:

- 1 Connect your machine to the network of the license manager.
- 2 Enter the following command by using this format to specify the license server port and host name, and the name of the feature whose license you are returning:

```
lmutil lmborrow -return -c serverPort@serverHostname featureName
```

For instance, to return a Polyspace Bug Finder desktop license (Polyspace_BF), enter:

```
lmutil lmborrow -return -c 27000@licenseMgrHostName Polyspace_BF
```

Contact your Polyspace license administrator for the license server port and host name.

Update Polyspace Products

To install the most recent update for Polyspace desktop or server products, close all running sessions of Polyspace, then run the update installer binary. The binary is part of your original Polyspace installation. Each update includes all the fixes from previous updates. To update the Polyspace desktop and server products, run the update installer twice, once for each Polyspace base product.

Note This update procedure is for R2019a and later releases only.

Install Update on Machine Connected to Internet

- 1 Open a command-line window and navigate to a folder that corresponds to your platform.

Windows	polyspaceroot\bin\win64
Linux	polyspaceroot/bin/glnxa64
macOS	polyspaceroot/bin/maci64

`polyspaceroot` is the Polyspace installation folder, for instance `C:\Program Files\Polyspace\R2019a`.

- At the command line, enter the command that corresponds to your platform.

Windows	<code>update_installer.exe</code>
Linux/macOS	<code>./update_installer</code>

Alternatively, you can open the update installer folder in a file explorer then double-click the `update_installer` binary.

To complete the update, follow the prompts in the UI.

Install Update on Machine Without Internet

To install a Polyspace update on a machine that is not connected to Internet, download the update package to an online computer. Then, run the update installer binary on the machine that is not connected to the Internet and use the `-updatepackage` option. You can use this workflow to run the update installer without a UI, for example to install an update on a server machine without a display.

- Go to https://www.mathworks.com/downloads/web_downloads/download_update_installers/R20XXy and download the update package that corresponds to your platform to an online computer.

`R20XXy` is the release version of the update, for instance R2019a.

- Unzip the update package to a location that is accessible from the machine where you want to install the update, for example, a network drive.
- On the machine where you want to install the update, open a command-line window and navigate to the folder that corresponds to your platform.

Windows	<code>polyspaceroot\bin\win64</code>
Linux	<code>polyspaceroot/bin/glnxa64</code>
macOS	<code>polyspaceroot/bin/maci64</code>

`polyspaceroot` is the Polyspace installation folder, for instance `C:\Program Files\Polyspace\R2019a`.

- At the command line, enter the command that corresponds to your platform.

Windows	<code>update_installer.exe -updatepackage <i>package_folder</i></code>
Linux/macOS	<code>./update_installer -updatepackage <i>package_folder</i></code>

`package_folder` is the full path to the folder where you unzipped the update package. The update installer runs silently and does not output any messages.

Check Update Installer Log and Update Version

To see the installation status if you run the update installer silently, or to check for errors in the installation update process, open the installer log file that is stored in your platform temporary folder.

Windows	<code>\%TEMP%\mathworks_yourusername.log</code>
Linux/macOS	<code>/tmp/mathworks_yourusername.log</code>

To check the version of the Polyspace update that is installed, go to the Polyspace installation folder and open `VersionInfo.xml`. The update version is listed inside the `<description/>` tag, for example:

```
...  
<release>R2019a</release>  
<description>Update 4</description>  
...
```

If no update is installed, the `<description/>` tag is empty.

See Also

More About

- “Run Polyspace Bug Finder on Desktop” on page 3-2
- “Review Polyspace Bug Finder Results in Polyspace User Interface” on page 3-8
- “Install Polyspace Server and Access Products” (Polyspace Bug Finder Server)
- “Update or Uninstall Polyspace Access” (Polyspace Bug Finder Access)

Install Polyspace Desktop Plugin for Eclipse

This topic describes how to install the Polyspace desktop plugin for analysis of complete Eclipse projects. To install the Polyspace as You Code plugin, see “Run Polyspace as You Code in Eclipse” (Polyspace Bug Finder Access).

After you install the Polyspace desktop products, you can proceed to install the Polyspace plugin for Eclipse.

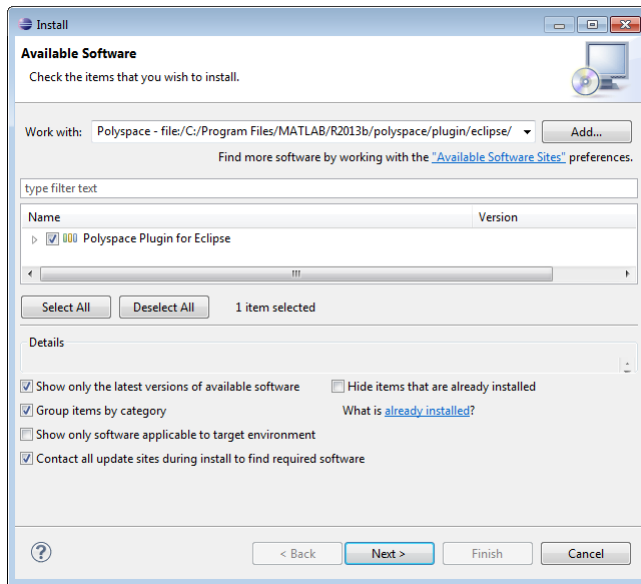
Install Polyspace Plugin

The Polyspace plugin is supported for Eclipse versions 4.11 to 4.18. You can install the Polyspace plugin only after you:

- Install and set up Eclipse Integrated Development Environment (IDE). For more information, see the Eclipse documentation at www.eclipse.org.
- Install Java® 8 or newer. See Java documentation at www.java.com.
- Uninstall any previous Polyspace plugins. For more information, see “Uninstall Polyspace Plugin” on page 2-10.

To install the Polyspace plugin:

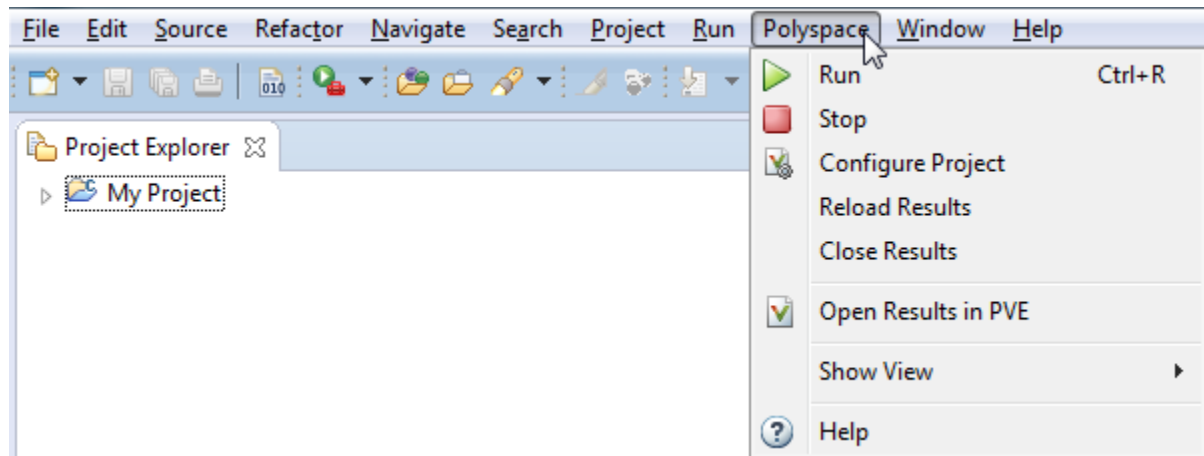
- 1** From the Eclipse editor, select **Help > Install New Software**. The Install wizard opens, displaying the Available Software page.
- 2** Click **Add** to open the Add Repository dialog box.
- 3** In the **Name** field, specify a name for your Polyspace site, for example, `Polyspace_Eclipse_PlugIn`.
- 4** Click **Local**, to open the Browse for Folder dialog box.
- 5** Navigate to the `polyspaceroot\polyspace\plugin\eclipse` folder. Then click **OK**.
polyspaceroot is the installation folder for the Polyspace product.
- 6** Click **OK** to close the Add Repository dialog box.
- 7** On the Available Software page, select **Polyspace Plugin for Eclipse**.



- 8 Click **Next**.
- 9 On the Install Details page, click **Next**.
- 10 On the Review Licenses page, review and accept the license agreement. Then click **Finish**.
- 11 Restart Eclipse. You might get this prompt: Select the folder where Polyspace Bug Finder was installed. Enter the path to your Polyspace installation, for instance, C:\Program Files\Polyspace\R2021a.

Once you install the plugin, in the Eclipse editor, you'll see:

- A **Polyspace** menu
- A **Polyspace Run - Bug Finder, Results List - Bug Finder**, and **Result Details** view.



Uninstall Polyspace Plugin

Before installing a new Polyspace plugin, you must uninstall any previous Polyspace plugins:

- 1 In Eclipse, select **Help > About Eclipse**.

- 2 Select **Installation Details**.
- 3 Select the Polyspace plugin and select **Uninstall**.

Follow the uninstall wizard to remove the Polyspace plugin. You must restart Eclipse for changes to take effect.

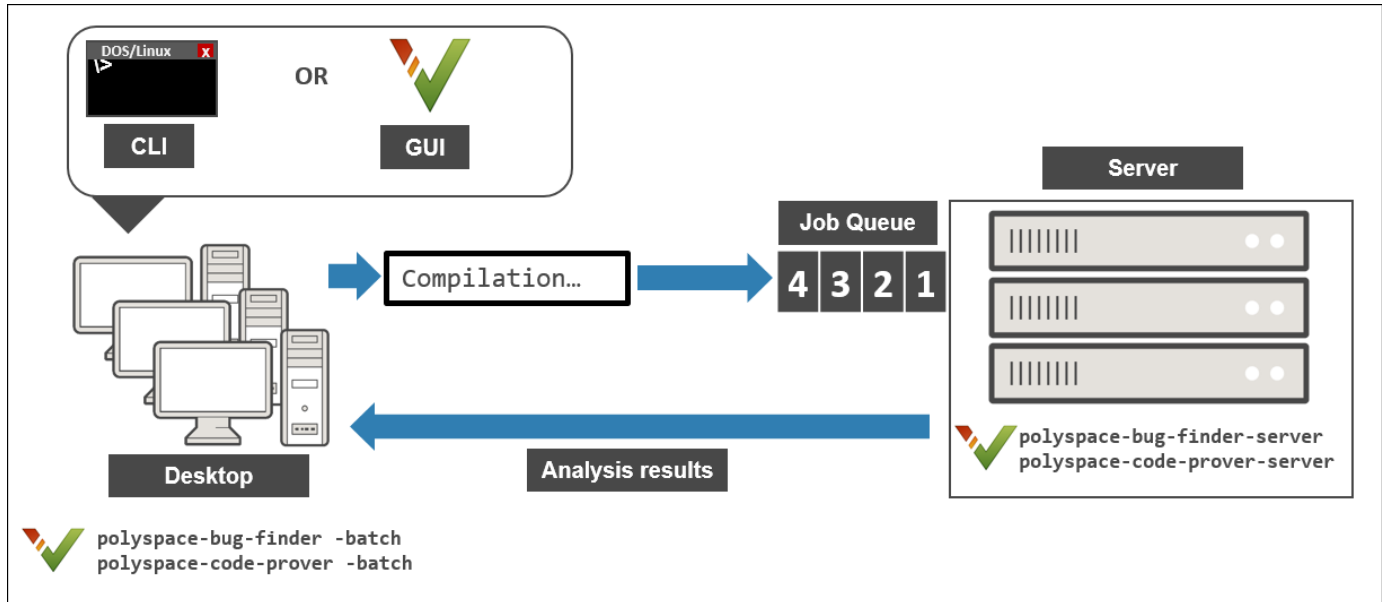
See Also

More About

- “Run Polyspace Analysis on Eclipse Projects”

Install Products for Submitting Polyspace Analysis from Desktops to Remote Server

You can perform a Polyspace analysis locally on your desktop or offload the analysis to one or more dedicated remote servers. This topic shows how to set up the dispatch of Polyspace analysis from desktop clients to remote servers. Once configured, you can send the Polyspace analysis to a remote server and view the downloaded results on your desktop.



Choose Between Local and Remote Analysis

To determine when to use local or remote analysis, use the rules listed in this table.

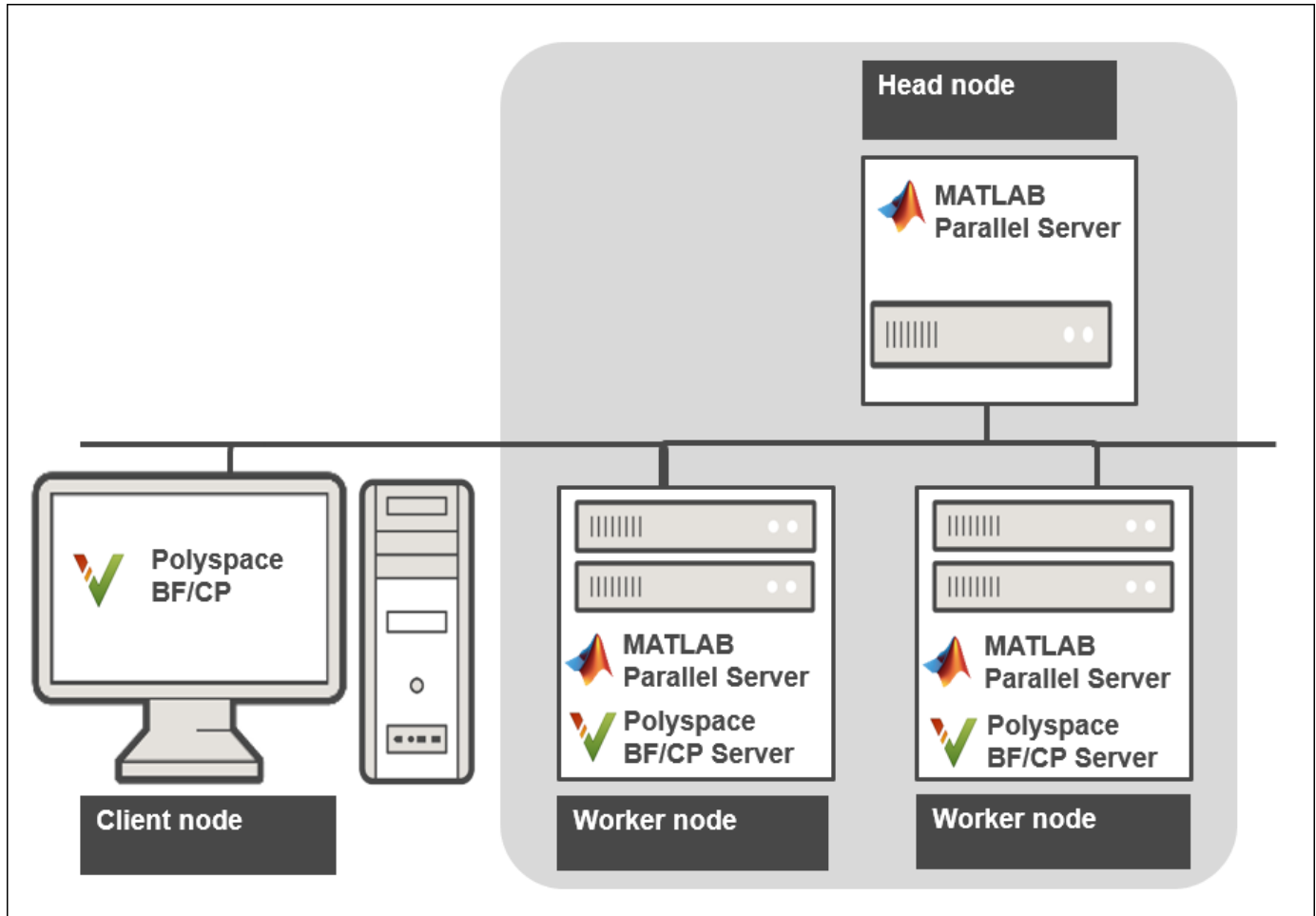
Type	When to Use
Remote	Source files are large and execution time of analysis is lengthy. Typically, a Code Prover analysis takes significantly longer than a Bug Finder analysis and benefits from running on a dedicated server.
Local	Source files are small and execution time of analysis is short.

Requirements for Remote Analysis

A typical distributed network for running remote analysis consists of these parts:

- **Client nodes:** On the client node, you configure your Polyspace project or scripts, and then submit a job that runs Polyspace.
- **Head node:** The head node distributes the submitted jobs to worker nodes.
- **Worker node(s):** The Polyspace analysis runs on a worker node.

In this workflow, you install the product MATLAB Parallel Server to manage submissions from multiple clients. An analysis job is created for each submission and placed in a queue. As soon as a worker node is available, the next analysis job from the queue is run on the worker.



This table lists the product requirements for remote analysis.

Location	Requirements	Installation
Client node	<p>Polyspace Bug Finder</p> <p>A Polyspace Bug Finder license is sufficient to trigger a Bug Finder or Code Prover analysis on the server and review the downloaded analysis results.</p>	<p>Run the MathWorks installer on the client desktops. Choose a license for Polyspace desktop products.</p> <p>For detailed instructions, see "Installation and Licensing".</p>

Location	Requirements	Installation
Head node	MATLAB Parallel Server (earlier called MATLAB Distributed Computing Server)	<p>Run the MathWorks installer on the server(s). Choose a license for MATLAB Parallel Server installation.</p> <p>For detailed instructions, see “Install and Configure MATLAB Parallel Server for MATLAB Job Scheduler and Network License Manager” (MATLAB Parallel Server).</p>
Worker nodes	<ul style="list-style-type: none"> • MATLAB Parallel Server (earlier called MATLAB Distributed Computing Server) • Polyspace Bug Finder Server • Polyspace Code Prover Server (if you choose to run Code Prover) 	<p>To install:</p> <ul style="list-style-type: none"> • MATLAB Parallel Server, run the MathWorks installer on the server(s). Choose a license for MATLAB Parallel Server installation. • Polyspace Bug Finder Server and/or Polyspace Code Prover Server, run the MathWorks installer. Choose a license for Polyspace server products.

In the simplest remote analysis configuration, the same computer can serve as the head node and worker node.

Selecting Number of Workers

To select the number of worker nodes to allocate, consider the following:

- Polyspace does not distribute a single analysis over multiple workers and executes one analysis entirely on one worker node. Do not expect an individual analysis to speed up if you use multiple workers (unless you run a file by file verification in Code Prover).

Only if the head node processes more than one analysis job at the same time can you benefit from multiple workers. This scenario is likely if multiple clients submit analysis jobs within a short time window.

- Each worker node must have a license available for executing the Polyspace analysis. Otherwise, a worker node might wait for a license to be released and you might not benefit from multiple workers.

Make sure that you do not allocate more workers than the number of licenses available.

Using MATLAB Parallel Server for distributing Polyspace jobs is different from other uses of MATLAB Parallel Server where a single job can be parallelized over multiple workers.

Configure and Start Server

On the computers that act as the worker nodes of the server, you install MATLAB Parallel Server and the Polyspace server products in two separate folders. The MATLAB Parallel Server installation must know where the Polyspace server products are located so that it can route the Polyspace analysis. To link the two installations, specify the paths to the root folder of the Polyspace server products in your MATLAB Parallel Server installations.

Then configure and start MATLAB Parallel Server (the `mjs` service) on all computers that act as the head node and worker nodes.

Configure mjs Service Settings

Before starting services, you must configure the `mjs` service settings.

- 1 Navigate to `matlabroot\toolbox\parallel\bin`, where `matlabroot` is the MATLAB Parallel Server installation folder, for instance, `C:\Program Files\MATLAB\R2021a`.
- 2 Modify the file `mjs_def.bat` (Windows) or `mjs_def.sh` (Linux). To edit and save the file, you have to open your editor in administrator mode.

Read the instructions in the file and uncomment the lines as needed. At a minimum, you might have to uncomment these lines:

- Hostname:

```
REM set HOSTNAME=%strHostname%.%strDomain%
```

in Windows or

```
#HOSTNAME=`hostname -f`
```

in Linux. Explicitly specify your computer host name.

- Security level:

```
REM set SECURITY_LEVEL=
```

in Windows or

```
#SECURITY_LEVEL=""
```

in Linux. Explicitly specify a security level.

Otherwise, you might see an error later when starting the job scheduler.

Specify Polyspace Installation Paths

When you offload an analysis using a Polyspace desktop product installation, the server must run the analysis using a Polyspace server product installation from the same release. For instance, if you offload an analysis from an R2021a desktop product, the analysis must run using the R2021a server product. To ensure that the correct Polyspace server product is used, you must specify the installation paths of the Polyspace server products in your MATLAB Parallel Server installations.

To specify the Polyspace installation paths:

- 1 Navigate to *matlabroot*\toolbox\parallel\bin\. Here, *matlabroot* is the MATLAB installation folder, for instance, C:\Program Files\MATLAB\R2021a.
- 2 Uncomment and modify the following line in the file *mjs_polyspace.conf*. To edit and save the file, you have to open your editor in administrator mode.

```
POLYSERVER_ROOT=polyspaceserverroot
```

Here, *polyspaceserverroot* is the installation path of the server products, for instance:

```
C:\Program Files\Polyspace Server\R2021a
```

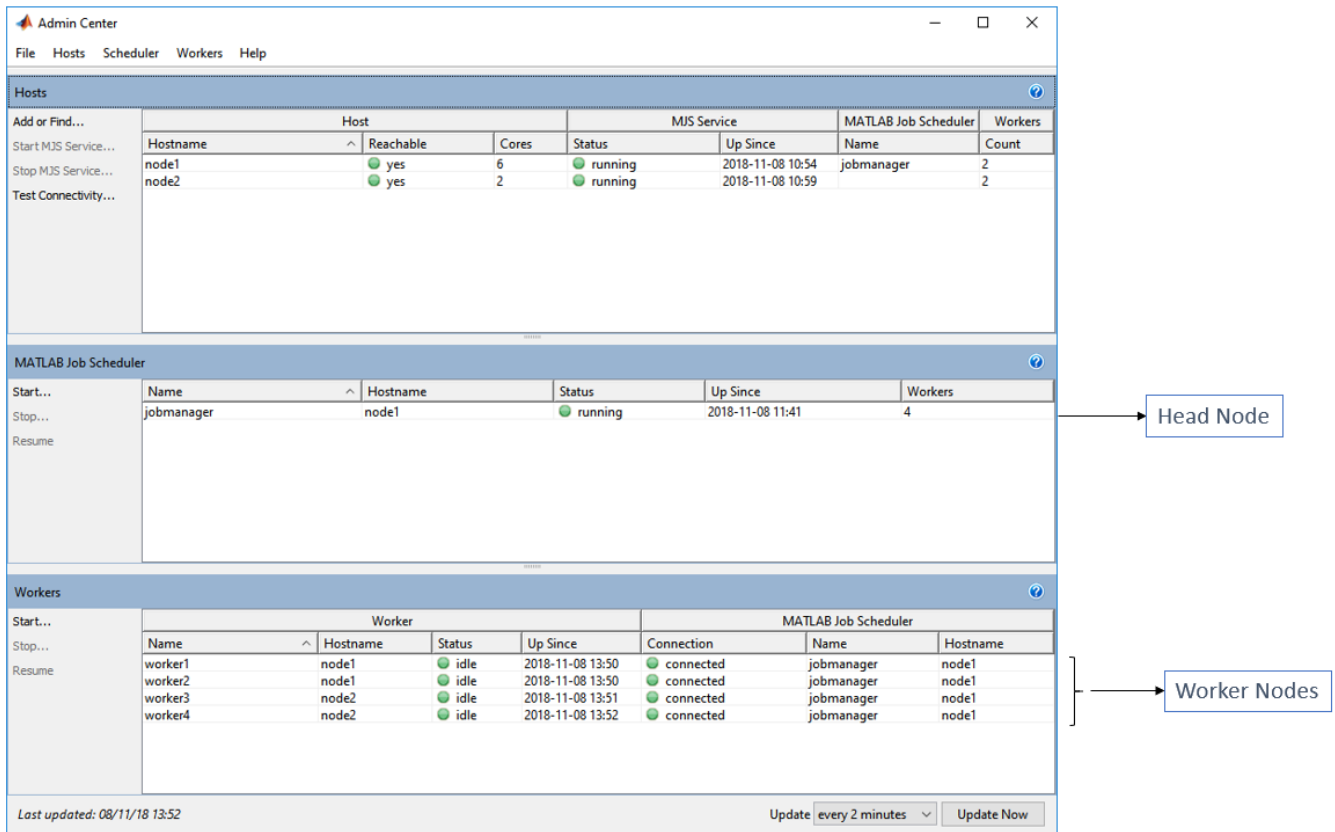
If you use multiple releases of Polyspace desktop and server products, the MATLAB Parallel Server release must be the later one. For instance, if you offload analysis jobs using both R2019a and R2019b Polyspace desktop and server products, the MATLAB Parallel Server installation must be an R2019b one. See also “Submit Analysis Jobs from Multiple Releases of Polyspace” on page 2-20.

Start mjs Service and Assign as Head Node or Worker Node

To configure a server with multiple workers, start the service that runs a job scheduler (the *mjs* service) on the computer that acts as the head node and all computers that act as worker nodes. In the simplest configuration, the same computer can act as the head node and a worker node.

To set up a cluster with one head node and several workers, on the computer that acts as the head node:

- 1 Open the **Admin Center** window. Navigate to *matlabroot*\toolbox\parallel\bin\ and execute the file *admincenter.bat* (Windows) or *admincenter.sh* (Linux). Here, *matlabroot* is the MATLAB installation folder, for instance, C:\Program Files\MATLAB\R2021a.



- 2 In the **Hosts** section, add the host names of all computers that you want to use as head and worker nodes of the cluster. Start the `mjs` service.

The service uses the settings specified in the file `mjs_def.bat` (Windows) or `mjs_def.sh` (Linux).

- 3 Right-click each host. Select either **Start MJS** (head node) or **Start Workers** (worker nodes).

The hosts appear in the **MATLAB Job Scheduler** or **Workers** section. In each section, select the host and click **Start** to start the MATLAB Job Scheduler or the workers.

Selecting a computer as host starts the `mjs` service on that computer. You must have permission to start services on other computers in the network. For instance, on Windows, you must be in the Administrators group for other computers where you want to start the `mjs` service. Otherwise, you have to start the `mjs` services individually on each computer that acts as a worker.

For more details and command-line workflows, see:

- “Install and Configure MATLAB Parallel Server for MATLAB Job Scheduler and Network License Manager” (MATLAB Parallel Server)
- `mjs`

Configure Client

Configure the client node so that it can communicate with the computer that serves as the head node of the MATLAB Parallel Server cluster. For scheduling jobs, you can use the job scheduler that comes with MATLAB Parallel Server (MATLAB Job Scheduler). If you were already using a third-party scheduler such as HPC Server or PBS Professional, you can continue to use that scheduler.

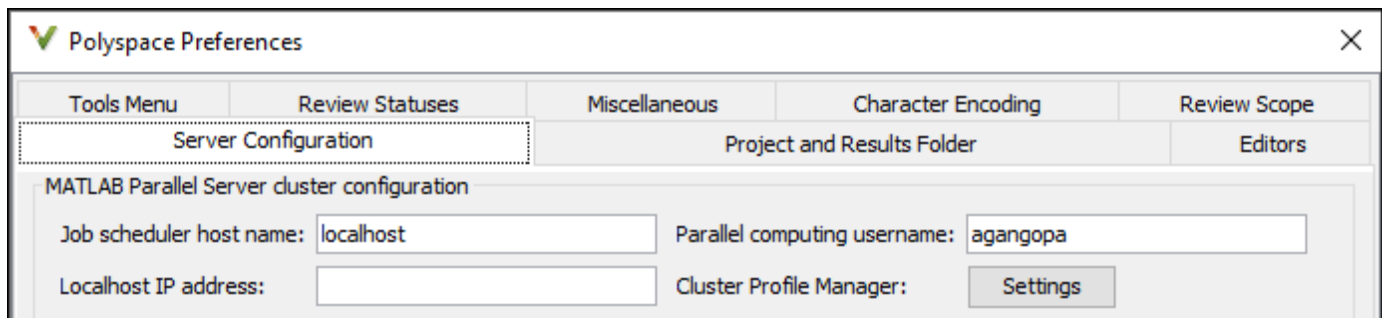
Use MATLAB Job Scheduler

Configure the client node in the user interface of the Polyspace desktop products:

- 1 Select **Tools > Preferences**.
- 2 Click the **Server Configuration** tab. Under **MATLAB Parallel Server cluster configuration**:
 - a In the **Job scheduler host name** field, specify the computer for the head node of the cluster. This computer hosts the MATLAB job scheduler.

If the port used on the computer hosting the MATLAB job scheduler is different from 27350, enter the port name explicitly with the notation *hostName:portNumber*.

- b Due to the network setting, the job scheduler may be unable to connect back to your local computer. If so, enter the IP address of the client computer in the **Localhost IP address** field.



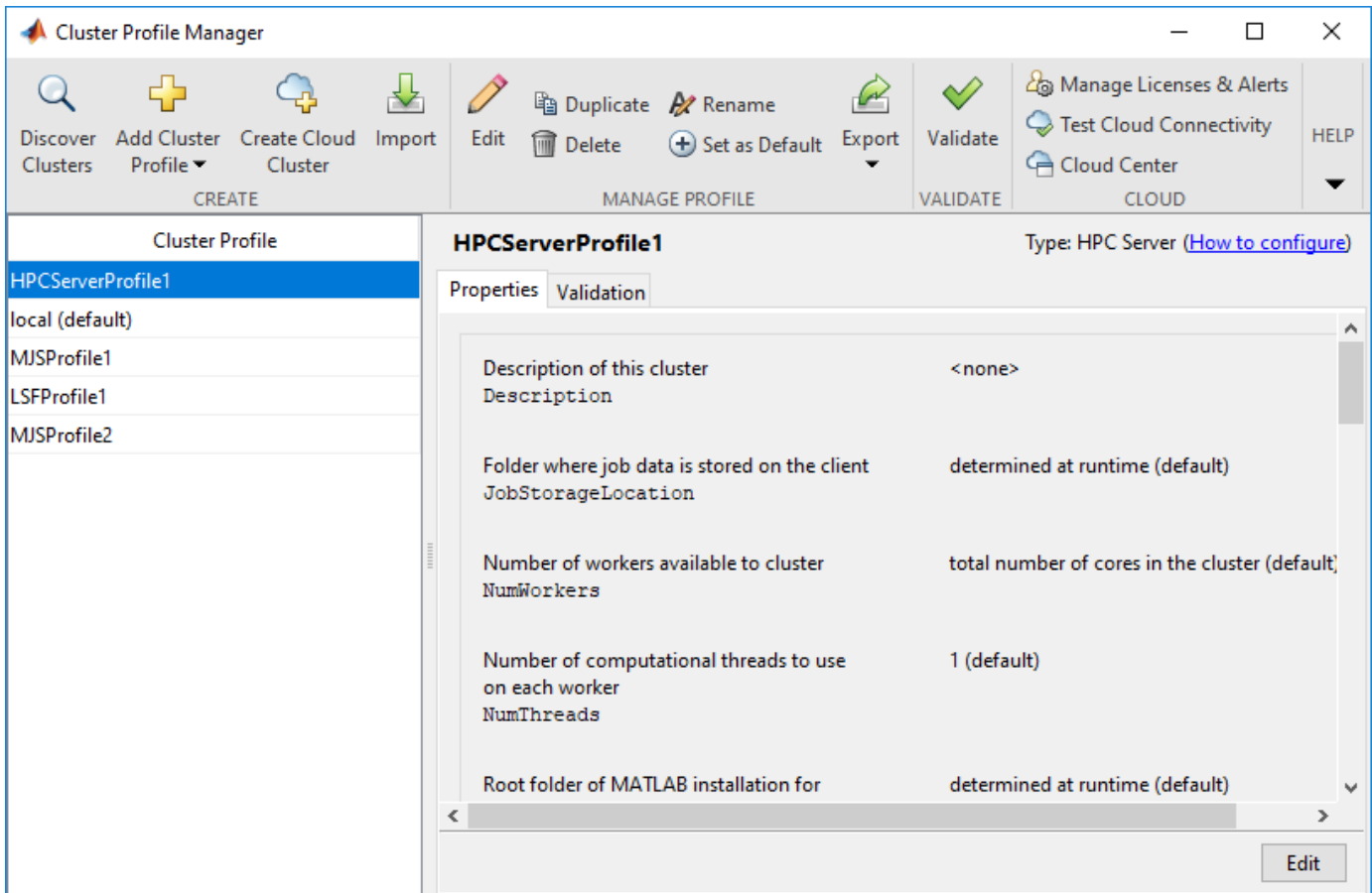
Create a Cluster Profile for Job Scheduling

Cluster profiles let you define certain properties for your cluster, such as number of threads per worker, timeouts, callbacks, and so on. For more information on cluster profiles, see “Discover Clusters and Use Cluster Profiles” (Parallel Computing Toolbox).

For instance, instead of the job scheduler provided with MATLAB Parallel Server, you can use a third party scheduler such as HPC Server or PBS Professional. You can create a cluster profile to use the third-party scheduler. You can also create a cluster profile that uses the MATLAB job scheduler but with nondefault properties. For instance, if you start the job manager with a certificate using the `-certificate` flag, you can create a cluster profile that uses this job manager.

To create and use a cluster profile:

- 1 In the Polyspace user interface, select **Tools > Preferences**.
- 2 In the Polyspace Preferences window, click the **Settings** button beside **Cluster Profile Manager**.
- 3 In the Cluster Profile Manager window, click **Add Cluster Profile**. Select a third-party scheduler. You see a default cluster profile using this scheduler.



- 4 Specify the properties of the cluster profile.
 - a Click **Edit**. Modify the default properties as needed.
 - b Click **Validate**. At a minimum, the cluster connection test and the job test must complete.
- 5 In the Polyspace Preferences window, for **Job scheduler host name**, specify the cluster profile name that you just created (for instance, HPCServerProfile1 in the example above).

Offload Polyspace Analysis from Desktop to Server

Once the configuration is over, you can offload an analysis from a Polyspace desktop product installation to a remote server. You can do one of the following:

- Start a remote analysis from the user interface of the Polyspace desktop products.

See “Send Polyspace Analysis from Desktop to Remote Servers”.

- Start a remote analysis with Windows or Linux scripts.

See “Send Polyspace Analysis from Desktop to Remote Servers Using Scripts”. In the simplest configuration, the same computer can be used as a client and server. For a simple tutorial that uses this configuration and walks through all the steps for offloading a Polyspace analysis, see “Send Bug Finder Analysis from Desktop to Locally Hosted Server” on page 3-12.

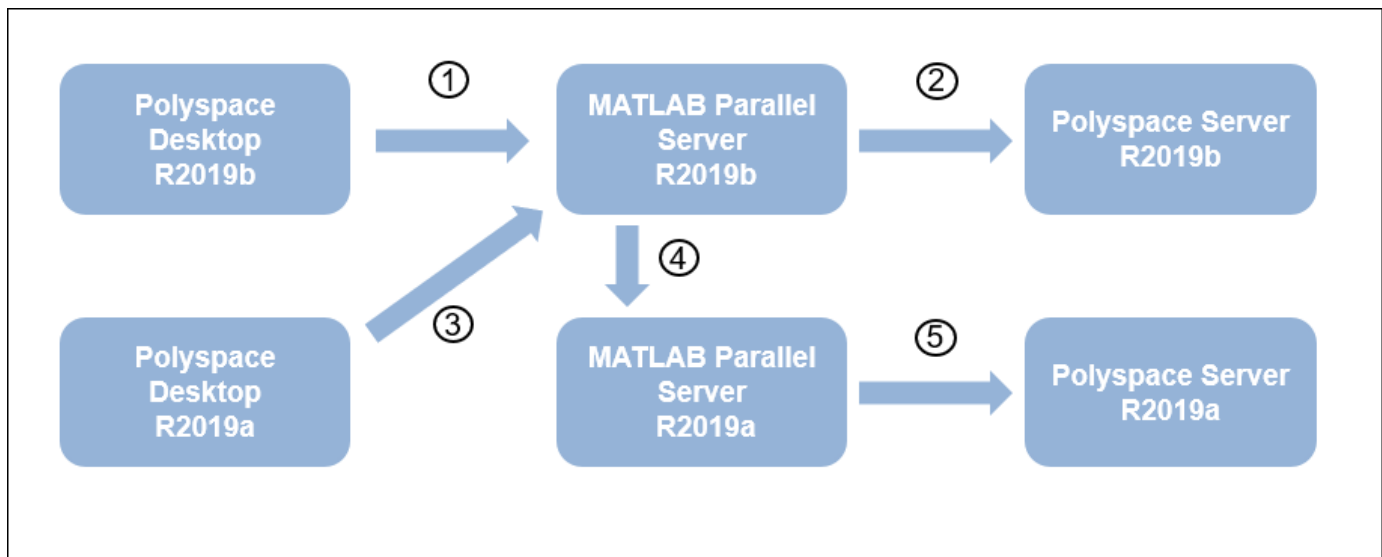
- Start a remote analysis with MATLAB scripts.

See “Run Analysis on Server”.

Submit Analysis Jobs from Multiple Releases of Polyspace

If you upgrade to a newer release of Polyspace products, you can continue to submit jobs from both the older and the new releases. For instance, suppose that you were using the R2019a release of Polyspace products and MATLAB Parallel Server. When you upgrade to the R2019b releases of the two sets of products, you can continue to submit jobs from the older releases.

The setup for handling multiple releases of Polyspace, for instance, R2019a and R2019b, looks like this:



To support submissions from multiple releases with a single MATLAB Parallel Server cluster, you have to link the various installations of Polyspace products and MATLAB Parallel Server. Of the links shown in the preceding figure, the links numbered 1, 2 and 5 are part of a regular server-client installation using all products from the same release. To create all the links, do these steps:

- 1 In the R2019b installation of the Polyspace desktop products, open the user interface and select **Tools > Preferences**. Specify the computer that acts as the head node of the R2019b MATLAB Parallel Server cluster, as described earlier.

If you are able to submit jobs from R2019b Polyspace desktop products, you have already done this step.

- 2 In the R2019b installation of the MATLAB Parallel Server products, edit the `mjs_polyspace.conf` file to point to the R2019b installation of the Polyspace Server products, as described earlier.

If your R2019b installation of MATLAB Parallel Server can run an analysis using R2019b Polyspace Server products, you have already done this step.

- 3 In the R2019a installation of the Polyspace desktop products, open the user interface and select **Tools > Preferences**. Specify the computer that acts as the head node of the R2019b MATLAB Parallel Server cluster.

If you install the R2019b version of MATLAB Parallel Server on the same computer as the R2019a version, you have already done this step. Otherwise, this step might be new in the multi-release workflow.

- 4 In the R2019b installation of the MATLAB Parallel Server products, edit the file `mjs_def.bat` or `mjs_def.sh` (located in `matlabroot\toolbox\parallel\bin\`) to refer to the earlier release. Find the line with `MJS_ADDITIONAL_MATLABROOTS` and edit it as follows. To edit and save the file, you have to open your editor in administrator mode.

```
set MJS_ADDITIONAL_MATLABROOTS=othermatlabroot
```

Here, *othermatlabroot* is the installation path of the MATLAB Parallel Server installation from the earlier release, for instance:

```
C:\Program Files\MATLAB\R2019a
```

This step is new in the multi-release workflow.

- 5 In the R2019a installation of the MATLAB Parallel Server products, edit the `mjs_polyspace.conf` file to point to the R2019a installation of the Polyspace Server products, as described earlier.

If your R2019a installation of MATLAB Parallel Server can run an analysis using R2019a Polyspace Server products, you have already done this step.

Note

- The lowest release of MATLAB Parallel Server that can be mixed with the current release using this workflow is R2016a.
 - For releases from R2016a to R2018b, the server side configuration is different from releases R2019a and later. Consult the documentation for older releases for step 5 above. However, if you are already submitting jobs from a pre-R2019a Polyspace installation using a pre-R2019a MATLAB Parallel Server installation, you have presumably done this step.
-

See Also

Related Examples

- “Set Up Polyspace Metrics” on page 2-23
- “Send Polyspace Analysis from Desktop to Remote Servers”
- “Send Polyspace Analysis from Desktop to Remote Servers Using Scripts”
- “Send Bug Finder Analysis from Desktop to Locally Hosted Server” on page 3-12
- “Job Manager Cannot Write to Database”
- “Install and Configure MATLAB Parallel Server for Third-Party Schedulers” (MATLAB Parallel Server)
- “Troubleshoot Common Problems” (MATLAB Parallel Server)

Set Up Polyspace Metrics

Note For easier collaborative reviews, use Polyspace Bug Finder Access™ . In addition to a more intuitive web dashboard, with Polyspace Access you can:

- Review and justify results directly from your web browser.
- Integrate a defect-tracking tool such as Jira with the web interface and create tickets to track Polyspace findings.
- Share analysis results using web links.

For more information, see the Polyspace Bug Finder Access documentation.

Polyspace Metrics is a web dashboard that generates code quality metrics from your verification results. Using this dashboard, you can:

- Provide your management a high-level overview of your code quality.
- Compare your code quality against predefined standards.
- Establish a process where you review in detail only those results that fail to meet standards.
- Track improvements or regression in code quality over time.

This topic shows how to set up a Polyspace Metrics server to store Polyspace results.

Requirements for Polyspace Metrics

You can use Polyspace Metrics to:

- Store Polyspace results.
- Evaluate and monitor software quality metrics based on those results.

You require a computer that acts as a server and hosts the Polyspace Metrics interface. Results from several client desktops can be uploaded to the Polyspace Metrics interface.

This table lists the requirements for Polyspace Metrics.

Location	Task	Requirements
Client desktops	The client desktops: <ul style="list-style-type: none"> • Run Polyspace and upload results to the server. • Download results from the server for detailed review. 	You must install Polyspace Bug Finder and/or Polyspace Code Prover.

Location	Task	Requirements
Server	<p>The server:</p> <ul style="list-style-type: none"> • Runs Polyspace Metrics service. • Hosts results uploaded from server and computes and displays quality metrics. You can load the server address and view the metrics. 	<p>You must install Polyspace Bug Finder and/or Polyspace Code Prover.</p> <p>However, you do not require activation to run the Polyspace Metrics service.</p>

You cannot merge two different Polyspace metrics databases. However, if you install a newer version of Polyspace on top of an older version, Polyspace Metrics automatically updates the database to the newest version.

Configure and Start Polyspace Metrics Server

This section shows you how to start the host server for Polyspace Metrics. After you complete this step, you must also configure the client side settings so that the user interface on the Polyspace desktops can interact with the Metrics server.

- 1 In the Polyspace user interface, select **Tools > Metrics Server Settings**.

Alternatively, run the following command:

```
polyspaceroot\polyspace\bin\polyspace-server-settings.exe
```

Here, *polyspaceroot* is the Polyspace installation folder, for instance, C:\Program Files\Polyspace\R2021a.

- 2 Under **Polyspace Metrics Settings**, specify this information:

- **User name used to start the service** — Your user name.
- **Password** — Your password (Windows only).
- **Communication port** — Polyspace communication port number (default 12427). This number must be the same as the communication port number specified in the Polyspace Interface preferences. See “Configure Client Side” on page 2-25.
- **Folder where analysis data will be stored** — Results repository for Polyspace Metrics server.

If you want to start Polyspace Metrics as a service, select **Install as service**. If you select this option, the Polyspace Metrics service starts automatically each time you restart the computer. You do not have to start the Metrics service explicitly. However, when you use the option, starting the server might require additional privileges, for instance, root privileges in Linux.

- 3 To start the Polyspace Metrics server, click **Start Server**.

The software stores the information that you specify through the Metrics Server Settings window in the following file:

- On a Windows system, `%APPDATA%\Polyspace_RLData\polyspace.conf`
`\polyspace.conf`.
- On a Linux system, `/etc/Polyspace/polyspace.conf`

You can edit this file directly for specific purposes. For instance, Polyspace Metrics uses Tomcat 8.0.22 to run the Metrics user interface. To specify your own version of Tomcat, add the following line to this file:

```
tomcat_install_dir = tomcat_path
```

Here, `tomcat_path` is the path to your Tomcat installation (on Windows, it is the value of the environment variable `CATALINA_HOME`).

To start Polyspace Metrics web server at the command line, use one of these commands:

- Windows: `perl polyspaceroot\toolbox\polyspace\psdistcomp\bin\setup-polyspace-cluster.pl`
- Linux: `./polyspaceroot/toolbox/polyspace/psdistcomp/bin/setup-polyspace-cluster`

Here, `polyspaceroot` is the Polyspace installation folder, for instance, `C:\Program Files\Polyspace\R2021a`. For more help in using the commands, use the `-h` option.

Configure Client Side

Once you have set up your Polyspace metrics server, you must set the client-side settings so that the Polyspace interface can communicate with your Metrics server.

- 1 Select **Tools > Preferences**.
- 2 Click the **Server Configuration** tab.
- 3 Select **Use Polyspace Metrics**.

Specify this information:

- a If you want Polyspace to detect a server on the network that uses port 12427 (default port number), click **Automatically detect the Polyspace Metrics Server**.
- b If you use a different port number for your Metrics server or you want to specify the server name, click **Use the following server and port**. Fill in your server name or IP address, and communication port number.

You must specify the same communication port number for all clients that use the Polyspace Metrics service.

- 4 Under the **Polyspace Metrics web interface configuration** section:
 - a Specify a **Port used to download results**, default is 12428. If you change this port number, you must also change it in on the server side.
 - b Specify which protocol to use HTTP or HTTPS. If you select HTTPS for your web protocol, there are additional steps to set up the Metrics web server for HTTPS on page 2-26.
 - c Specify a web server port number for your chosen protocol. Default port numbers are:
 - HTTP — 8080

- HTTPS — 8443

If you change the port number from the default, you must configure the same port number for the Polyspace Metrics server. See “Configure and Start Polyspace Metrics Server” on page 2-24.

5 Under the **Upload and download settings** section:

- Upload settings — After you review results from the Metrics repository, you can upload your comments and justifications back to the repository using **Metrics > Upload to Metrics**.

If you want Polyspace to automatically upload your justifications to Polyspace Metrics when you save, select **Upload justifications automatically in the Polyspace Metrics repository...**

- Download settings — In Polyspace Metrics, when you click an item to view, Polyspace downloads your results and opens them in the Polyspace environment. Select where to download your Polyspace Metrics results, either:
 - To the project folder, or, if a project does not exist, a default folder.
 - Ask every time where to download results.

To view Polyspace Metrics, in the address bar of your web browser, enter:

```
protocol://ServerName:WSPN
```

- *protocol* is http or https.
- *ServerName* is the name or IP address of your Polyspace Metrics server.
- *WSPN* is the web server port number, the default is 8080 or 8443.

Configure Web Server for HTTPS

By default, the data transfer between the Polyspace desktop products and the Polyspace Metrics web interface is not encrypted. You can enable HTTPS for the web protocol, which encrypts the data transfer. To set up HTTPS, you must change the server configuration and set up a keystore for the HTTPS certificate.

Before you start the following procedure, you must complete “Configure and Start Polyspace Metrics Server” on page 2-24 and “Configure Client Side” on page 2-25.

To configure HTTPS access to Polyspace Metrics:

- 1 Open the Metrics Server Settings dialog box as stated in “Configure and Start Polyspace Metrics Server” on page 2-24.
- 2 Click **Stop Server**. The software stops the Polyspace Metrics services. Now, you can make the changes required for HTTPS.
- 3 Open the file *metricsRootFolder*\tomcat\conf\server.xml in a text editor. Here, *metricsRootFolder* is the name that you specified for **Folder where analysis data will be stored**. Look for the following text:

```
<!--  
  <Connector port="8443" SSLEnabled="true" scheme="https"  
    secure="true" clientAuth="false" sslProtocol="TLS"  
    keystoreFile="<datadir>/.keystore" keystorePass="polyspace"/>  
-->
```


If the text is not in your `server.xml` file:

- a Delete the entire `..\conf\` folder.
- b In the Metrics Server Settings dialog box, restart services by clicking **Start Server**.
- c Click **Stop Server** to stop the services again so that you can finish setting up the server for HTTPS.

The `conf` folder is regenerated, including the `server.xml` file. The file now contains the text required to configure the HTTPS web server.

- 4 Follow the commented-out instructions in `server.xml` to create a keystore for the HTTPS certificate.
- 5 In the Metrics Server Settings dialog box, to restart the Polyspace Metrics service with the changes, click **Start Server**.

To view Polyspace Metrics, in the address bar of your web browser, enter:

`https://ServerName:WSPN`

- *ServerName* is the name or IP address of the Polyspace Metrics server.
- *WSPN* is the web server port number.

Change Web Server Port Number for Metrics Server

If you change or specify a non-default value for the web server port number of your Polyspace Bug Finder client, you must manually configure the same value for your Polyspace Metrics server.

- 1 Select **Metrics > Metrics Server Settings**.
- 2 In the Metrics Server Settings dialog box, select **Stop Server** to stop the Polyspace Metrics server daemon.
- 3 In `metricsRootFolder\tomcat\conf\server.xml`, edit the `port` attribute of the `Connector` element for your web server protocol. Here, *metricsRootFolder* is the name that you specified for **Folder where analysis data will be stored** when setting up Polyspace Metrics.

- For HTTP:

```
<Connector port="8080"/>
```

- For HTTPS:

```
<Connector port="8443" SSLEnabled="true" scheme="https"
secure="true" clientAuth="false" sslProtocol="TLS"
keystoreFile="<datadir>/.keystore" keystorePass="polyspace"/>
```

- 4 In the same file, edit the `port` attribute of the `Server` element for your web server protocol.

```
<Server port="8005" shutdown="SHUTDOWN">
```

- 5 In the Metrics Server Settings dialog box, select **Start Server** to restart the server with the new port numbers.
- 6 On the Polyspace toolbar, select **Tools > Preferences**.
- 7 In the **Server Configuration** tab, change the **Web server port number** to match your new value for the `port` attribute in the `Connector` element.

See Also

Related Examples

- “View Results List in Polyspace Metrics”

Compiler Requirements

Polyspace fully supports the most common compilers used to develop embedded applications. If you compile your code with one of these compilers, you can run analysis simply by specifying your compiler and target processor. See the full list of compilers on the reference page for option `Compiler (-compiler)`.

If you do not compile your code using a supported compiler, you can specify a generic compiler. If you face compilation errors from compiler-specific language extensions, you can explicitly define these extensions to work around the errors. Use the options `Preprocessor definitions (-D)` and `Command/script to apply to preprocessed files (-post-preprocessing-command)`.

Get Started with Polyspace Bug Finder

- “Run Polyspace Bug Finder on Desktop” on page 3-2
- “Review Polyspace Bug Finder Results in Polyspace User Interface” on page 3-8
- “Send Bug Finder Analysis from Desktop to Locally Hosted Server” on page 3-12

Run Polyspace Bug Finder on Desktop

Polyspace Bug Finder identifies run-time errors, concurrency issues, security vulnerabilities, and other defects in C and C++ embedded software. Using static analysis, including semantic analysis, Bug Finder analyzes control flow, data flow, and interprocedural behavior. By highlighting defects as soon as they are detected, Bug Finder lets you triage and fix bugs early in the development process.

You can run Bug Finder on complete C/C++ projects from the Polyspace user interface, in a supported development environment (IDE) such as Eclipse or using scripts. See:

- “Run Polyspace in User Interface” on page 3-3

If this is your first time using Polyspace, you might want to start from the Polyspace user interface. You can get help from features such as a project setup wizard, assisted configuration and summarized analysis log.

- “Run Polyspace on Windows or Linux Command Line” on page 3-5

Once you set up a project in the Polyspace user interface and complete a few trial runs, you can export the configuration to scripts that you run automatically or on-demand. You can also run a Polyspace analysis directly from the command line in your operating system. You can then save the commands in batch files (Windows) or shell scripts (Linux) for later runs. If you are running Polyspace Server products using continuous integration tools such as Jenkins, you can reuse your scripts from the Polyspace desktop products.

- Run Polyspace in IDEs on page 3-5

Once you are familiar with running Polyspace from the command line, you can create menu items in your IDE that run your scripts and launch a Polyspace analysis in one click. In Eclipse and Eclipse-based IDEs, you can install a Polyspace plugin that does not require any additional setup at all. When you run Polyspace from the Eclipse plugin, the analysis configuration is created directly from your Eclipse project.

Instead of analyzing complete projects, in your IDE, you can analyze just the current file that you are working on using Polyspace as You Code. You can install a Polyspace as You Code extension/plugin in commonly used IDEs such as Visual Studio, Visual Studio Code, or Eclipse. See “Run Polyspace as You Code in IDEs and Review Results” (Polyspace Bug Finder Access).

- “Run Polyspace in MATLAB” on page 3-6

If you have a MATLAB installation, it is particularly easy to write scripts to run a Polyspace analysis. You get all the benefits of scripting in the MATLAB environment, for instance, automatic help on function syntaxes. After analysis, you can create your own visualization of the results using MATLAB graphics and visualization tools.

To follow the steps in this tutorial, copy the files from <i>polyspaceroot</i> \polyspace\examples\cxx\Bug_Finder_Example\sources to another folder. Here, <i>polyspaceroot</i> is the Polyspace installation folder, for instance, C:\Program Files\Polyspace\R2021a.
--

Run Polyspace in User Interface

Open Polyspace User Interface

Double-click the `polyspace` executable in `polyspaceroot\polyspace\bin`. Here, `polyspaceroot` is the Polyspace installation folder, for instance, `C:\Program Files\Polyspace\R2021a`. See also “Installation Folder” on page 2-3.

If you set up a shortcut to Polyspace on your desktop or the **Start** menu in Windows, double-click the shortcut.

Add Source Files

To run an analysis, you have to create a new Polyspace project. A Polyspace project points to source and include folders on your file system.

On the left of the **Start Page** pane, click **Start a new project**. Alternatively, select **File > New Project**.

After you provide a project name, on the next screens, add your source and include folders (both folders can be the same). In this tutorial, add the path to the folder in which you saved the source and include files.

Project - Properties

Define project

Project definition and location

Project name: polyspace_project

Version: 1.0

Author: userName

Use default location

Location: iangopa\Documents\Polyspace_Workspace\polyspace_project

Project configuration

Use template

Create from build command

Create from AUTOSAR specification

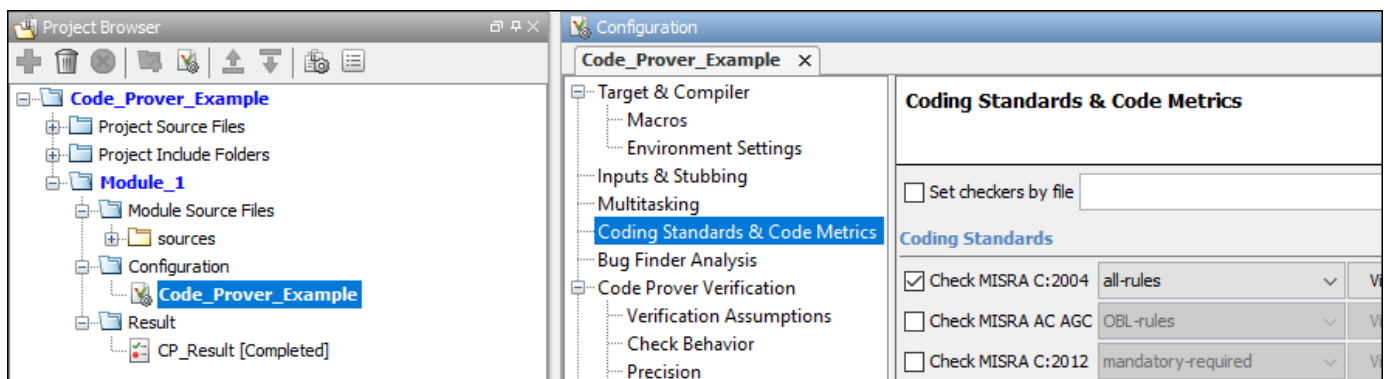
Back Next Finish Cancel

After you finish adding your source and include folders, you see a new project on the **Project Browser** pane. Your source folders are copied to the first module in the project. You can right-click a project to add more folders later. If you add folders later, you must explicitly copy them to a module.

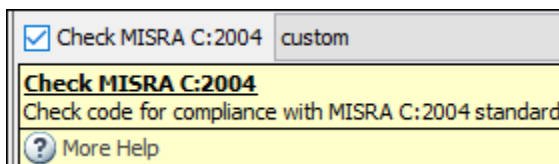
Configure and Run Polyspace

You can change the default options associated with a Polyspace analysis.

Click the **Configuration** node in your project module. On the **Configuration** pane, change options as needed. For instance, on the **Coding Rules & Code Metrics** node, select **Check MISRA C:2004**.



For more information, see the tooltip on each option. Click the **More help** link for context-sensitive help on the options.



To start analysis, click **Run Bug Finder** in the top toolbar. If the button indicates Code Prover, click the arrow beside the button to switch to Bug Finder.

Follow the progress of analysis on the **Output Summary** window. After the analysis, the results open automatically.

Additional Information

See:

- “Add Source Files for Analysis in Polyspace User Interface”
- “Run Polyspace Analysis on Desktop”

Run Polyspace on Windows or Linux Command Line

You can run Bug Finder from the Windows or Linux command line with batch (.bat) files or shell (.sh) scripts.

To run a Bug Finder analysis, use the `polyspace-bug-finder` command.

To save typing the full path to the command, add the path `polyspaceroot\polyspace\bin` to the `Path` environment variable on your operating system. Here, `polyspaceroot` is the Polyspace installation folder, for instance, `C:\Program Files\Polyspace\R2021a`.

Navigate to the folder where you saved the files (using `cd`). Enter the following:

```
polyspace-bug-finder -sources numerical.c,dataflow.c -I . -results-dir .
```

Here, `.` indicates the current folder. The options used are:

- `-sources`: Specify comma-separated source files.
- `-I`: Specify path to include folder. Use the `-I` flag each time you want to add a separate include folder.
- `-results-dir`: Specify the path to the folder where Polyspace Bug Finder results will be saved.

Note that the results folder is cleaned up and repopulated at each run. To avoid accidental removal of files during the cleanup, instead of using an existing folder that contains other files, specify a dedicated folder for the Polyspace results.

After analysis, the results are saved in the file `ps_results.psbf`. You can open this file from the Polyspace user interface. For instance, enter the following:

```
polyspace ps_results.psbf
```

Instead of specifying comma-separated sources directly on the command line, you can list the sources in a text file (one file per line). Use the option `-sources-list-file` to specify this text file.

Additional Information

See:

- “Run Polyspace Analysis from Command Line”
- `polyspace-bug-finder`

Run Polyspace in Eclipse

If you develop code in Eclipse or an Eclipse-based IDE, you can run Code Prover directly from your IDE.

After installing the Eclipse plugin on page 2-9, you can run Polyspace directly on the files in your Eclipse projects.

In the **Project Explorer** pane in Eclipse, select your project. To use Bug Finder for the analysis, select **Polyspace > Bug Finder**. To start the analysis, select **Polyspace > Run** (Ctrl + R).

After analysis, the results open automatically in Eclipse.

Additional Information

See “Run Polyspace Analysis on Eclipse Projects”.

Run Polyspace in MATLAB

Before you run Polyspace from MATLAB, you must link your Polyspace and MATLAB installations. See “Integrate Polyspace with MATLAB and Simulink”.

To run an analysis, use a `polyspace.Project` object. The object has two properties:

- **Configuration:** Specify the analysis options such as sources, includes, compiler and results folder using this property.
- **Results:** After analysis, read the analysis results to a MATLAB table using this property.

To run the analysis, use the `run` method of this object.

To run Polyspace on the example file `numerical.c` in `polyspaceroot\polyspace\examples\cxx\Bug_Finder_Examples\sources`, enter the following at the MATLAB command prompt.

```
proj = polyspace.Project

% Configure analysis
proj.Configuration.Sources = {fullfile(polyspaceroot, 'polyspace', ...
    'examples', 'cxx', 'Bug_Finder_Example', 'sources', 'numerical.c')};
proj.Configuration.TargetCompiler.Compiler = 'gnu4.9';
proj.Configuration.EnvironmentSettings.IncludeFolders = {fullfile(polyspaceroot, ...
    'polyspace', 'examples', 'cxx', 'Bug_Finder_Example', 'sources')}
proj.Configuration.ResultsDir = fullfile(pwd, 'results');

% Run analysis
bfStatus = proj.run('bugFinder');

% Read results
resObj = proj.Results;
bfSummary = getSummary(resObj, 'defects');
bfResults = getResults(resObj, 'readable');
```

After analysis, the results are saved in the file `ps_results.psbf`. You can open this file from the Polyspace user interface. For instance, enter the following:

```
resultsFile = fullfile(proj.Configuration.ResultsDir, 'ps_results.psbf');
polyspaceBugFinder(resultsFile)
```

Additional Information

See:

- “Run Polyspace Analysis by Using MATLAB Scripts”
- `polyspace.Project`
- `polyspace.Project.Configuration` Properties

See Also

Related Examples

- “Review Polyspace Bug Finder Results in Polyspace User Interface” on page 3-8
- “Run Polyspace Analysis on Code Generated with Embedded Coder”

Review Polyspace Bug Finder Results in Polyspace User Interface

Polyspace Bug Finder checks C/C++ code for defects, coding rule violations or security vulnerabilities. After you run an analysis, you open the results in the Polyspace user interface (or if you ran the analysis in Eclipse, the results open in Eclipse).

This topic shows how to review some sample results in the Polyspace user interface. The Polyspace user interface is available with the desktop products, Polyspace Bug Finder and Polyspace Code Prover.

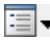
- If you run a single-file analysis in your IDE using Polyspace as You Code, you can review the results directly within your IDE. See “Run Polyspace as You Code in IDEs and Review Results” (Polyspace Bug Finder Access).
- If you run an analysis using a Polyspace Server product and upload to Polyspace Access, you can review the results in a web browser. See “Review Polyspace Bug Finder Results in Web Browser” (Polyspace Bug Finder Access).

To follow the steps in this tutorial, run Polyspace using the steps in “Run Polyspace Bug Finder on Desktop” on page 3-2. Alternatively, in the Polyspace user interface, open example results using **Help > Examples > Bug_Finder_Example.psprj**. If you have loaded the example results earlier and made some changes, to load a fresh copy, select **Help > Examples > Restore Default Examples**.

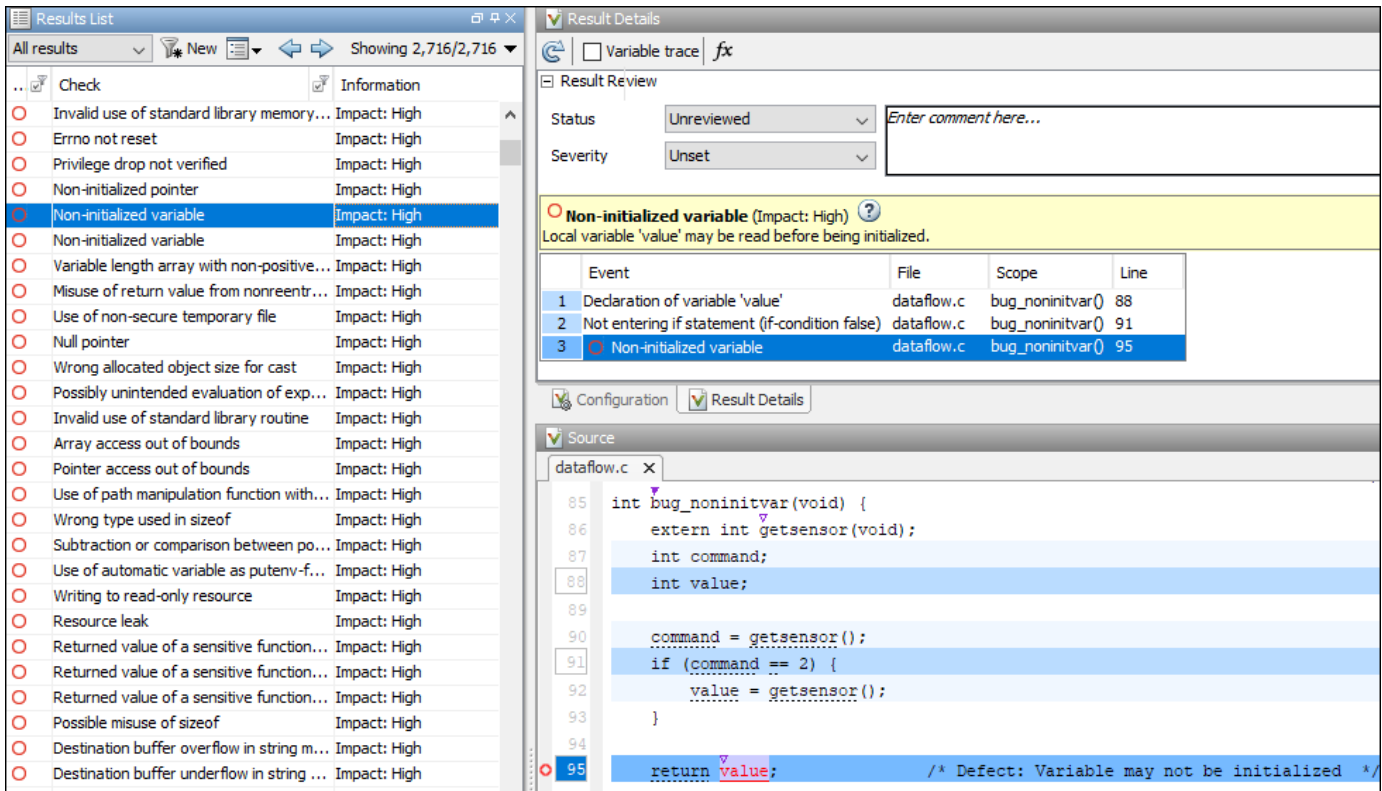
Interpret Results

Review each Polyspace result. Find the root cause of the issue.

Start from the list of results on the **Results List** pane.

- If the **Results List** pane covers the entire window, select **Window > Reset Layout > Results Review**.
- If you do not see a flat list of results, but instead see them grouped, from the  list, select **None**.

Click the **Check** column header to sort the results alphabetically. Select one of the **Non-initialized variable** results.



See the source code on the **Source** pane and further information about the result on the **Result Details** pane.

The **Result Details** pane also highlights a sequence of events leading to the result. For instance, for the **Non initialized variable** result, you see the following events:

- The variable `value` is declared.
- The `if` statement where `value` gets initialized is skipped.
- The variable `value` is read.

You also see these events highlighted in blue on the source code. Sometimes, these events can be located far apart in the source code. Click an event on the **Result Details** pane to navigate to the corresponding location on the source code.

Additional Information

See:

- “Interpret Bug Finder Results in Polyspace Desktop User Interface”
- “Polyspace Bug Finder Results”

Address Results Through Bug Fix or Comments

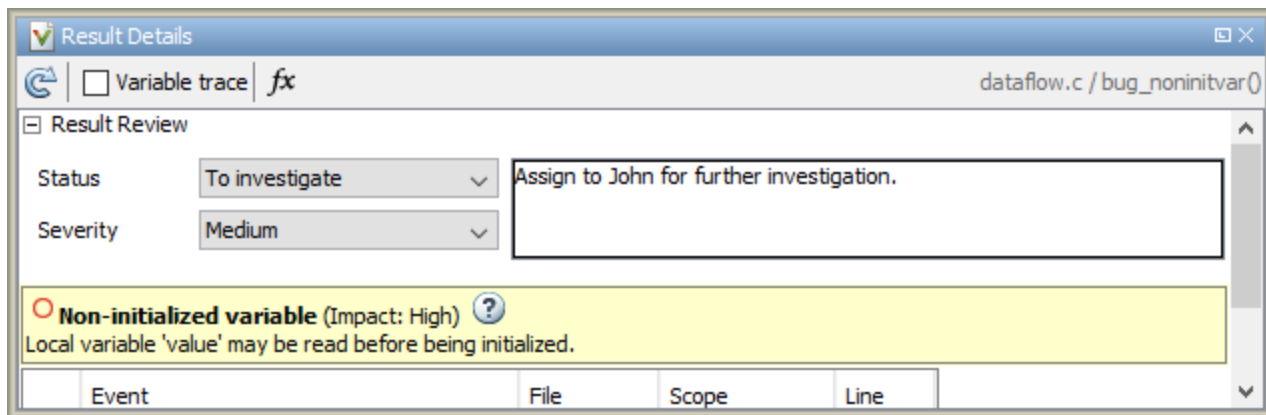
Once you understand the root cause of a Polyspace finding, you can fix your code. Otherwise, add comments to your Polyspace results to fix the code later or to justify the result. You can use the comments to keep track of your review progress.

Right-click the variable value on the **Source** pane. Select **Open Editor**. The code opens in a text editor. Fix the issue. For instance, you can initialize value during declaration.

```
int value = -1;
```

If you rerun the analysis, you do not see the **Non-initialized variable** defect.

Alternatively, if you do not want to fix the defect immediately, assign a status **To investigate** to the result. Optionally, add comments with further explanation.



If you assign a status **No action planned**, the result does not appear in subsequent runs on the same project.

Additional Information

See:


- “Address Polyspace Results Through Bug Fixes or Justifications”
- “Annotate Code and Hide Known or Acceptable Results”

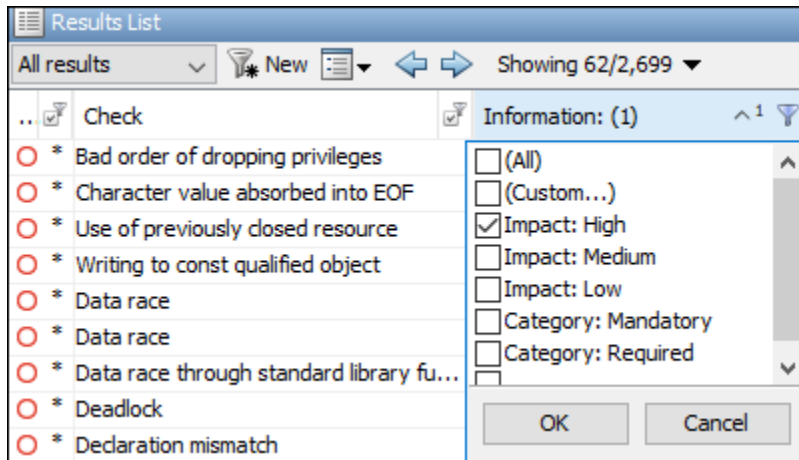
Manage Results

When you open the results of a Bug Finder analysis, you see a flat list of defects, coding rule violations or other results. To organize your review, you can narrow down the list or group results by file or result type.

For instance, you can:

- Review only high impact defects.

Click the **Information** column header to sort defects by impact. Alternatively, you can filter out results other than high-impact defects. To begin filtering, click the  icon on the column header.



- Review only the new results since the last analysis.

On the **Results List** pane toolbar, click the **New** button.

- Review results in certain files or functions.

On the **Results List** pane toolbar, from the  list, select **File**.

Additional Information

See “Filter and Group Results in Polyspace Desktop User Interface”.

Send Bug Finder Analysis from Desktop to Locally Hosted Server

You can perform a Polyspace analysis locally on your desktop or offload the analysis to one or more dedicated servers. This topic shows a simple server-client configuration for offloading the Polyspace analysis. In this configuration, the same computer acts as a client that submits a Polyspace analysis and a server that runs the analysis.

You can extend this tutorial to more complex configurations. For full setup and workflow instructions, see related links below.

Client-Server Workflow for Running Analysis

After the initial setup, you can submit a Polyspace analysis from a client desktop to a server. The client-server workflow happens in three steps. All three steps can be performed on the same computer or three different computers. This tutorial uses the same computer for the entire workflow.

- 1 Client node:** You specify Polyspace analysis options and start the analysis on the client desktop. The initial phase of analysis till compilation runs on the desktop. After compilation, the analysis job is submitted to the server.

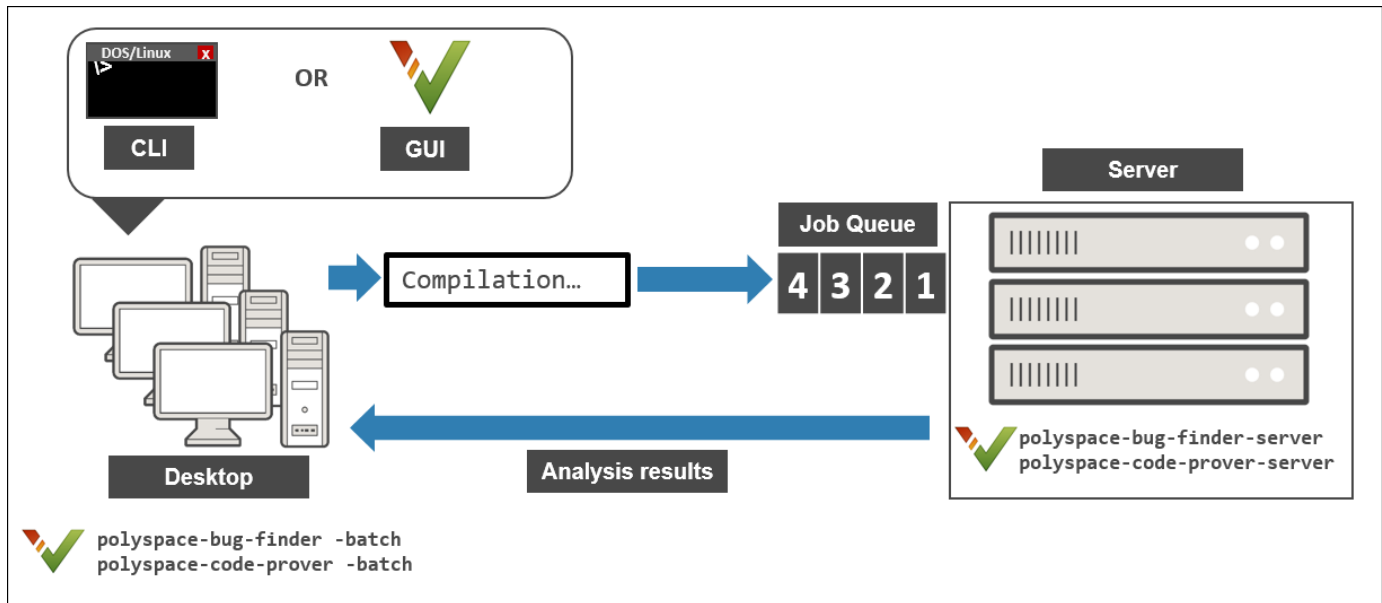
You require the Polyspace desktop product, Polyspace Bug Finder on the computer that acts as the client node.

- 2 Head node:** The server consists of a head node and several worker nodes. The head node uses a job scheduler to manage submissions from multiple client desktops. The jobs are then distributed to the worker nodes as they become available.

You require the product MATLAB Parallel Server on the computer that acts as the head node.

- 3 Worker nodes:** When a worker becomes available, the job scheduler assigns the analysis to the worker. The Polyspace analysis runs on the worker and the results are downloaded back to the client desktop for review.

You require the product MATLAB Parallel Server on the computers that act as worker nodes. You also require the Polyspace server product, Polyspace Bug Finder Server to run the analysis.



See also “Install Products for Submitting Polyspace Analysis from Desktops to Remote Server” on page 2-12.

Prerequisites

This tutorial uses the same computer as client and server. You must install the following on the computer:

- Client-side product: Polyspace Bug Finder
- Server-side products: MATLAB Parallel Server and Polyspace Bug Finder Server

For more information, see “Install Products for Submitting Polyspace Analysis from Desktops to Remote Server” on page 2-12.

You must know the host name of your computer. For instance, in Windows, open a command-line terminal and enter:

```
hostname
```

Configure and Start Server

Stop Previous Services

If you started the services of MATLAB Parallel Server (mjs services) previously, make sure that you have stopped all services. In particular, you might have to:

- Check your temporary folder, for instance, `C:\Windows\Temp` in Windows, and remove the MDCE folder if it exists.
- Stop all services explicitly.

Open a command-line terminal. Navigate to `matlabroot\toolbox\parallel\bin` (using `cd`) and enter the following:

```
mjs uninstall -clean
```

Here, `matlabroot` is the MATLAB Parallel Server installation folder, for instance, `C:\Program Files\MATLAB\R2021a`.

If this is the first time you are starting the services, you do not have to do these steps.

Configure mjs Service Settings

Before starting services, you have to configure the `mjs` service settings. Navigate to `matlabroot\toolbox\parallel\bin`, where `matlabroot` is the MATLAB Parallel Server installation folder, for instance, `C:\Program Files\MATLAB\R2021a`. Modify these two files. To edit and save these files, you have to open your editor in administrator mode.

- `mjs_def.bat` (Windows) or `mjs_def.sh` (Linux)

Read the instructions in the file and uncomment the lines as needed. At a minimum, you might have to uncomment these lines:

- Hostname:

```
REM set HOSTNAME=myHostName
```

in Windows or

```
#HOSTNAME=`hostname -f`
```

in Linux. Remove the `REM` or `#` and explicitly specify your computer host name.

- Security level:

```
REM set SECURITY_LEVEL=
```

in Windows or

```
#SECURITY_LEVEL=""
```

in Linux. Remove the `REM` or `#` and explicitly specify a security level.

Otherwise, you might see an error later when starting the job scheduler.

- `mjs_polyspace.conf`

Modify and uncomment the line that refers to a Polyspace server product root. The line should refer to the release number and root folder of your Polyspace server product installation. For instance, if the R2021a release of Polyspace Bug Finder Server is installed in the root folder `C:\Program Files\Polyspace Server\R2021a`, modify the line to:

```
POLYSPACE_SERVER_ROOT=C:\Program Files\Polyspace Server\R2021a
```

Otherwise, the MATLAB Parallel Server installation cannot locate the Polyspace Bug Finder Server installation to run the analysis.

Start Services

Start the `mjs` services and assign the current computer as both the head node and a worker node.

Navigate to `matlabroot\toolbox\parallel\bin`, where `matlabroot` is the MATLAB Parallel Server installation folder, for instance, `C:\Program Files\MATLAB\R2021a`. Run these commands (directly at the command line or using scripts):

```
mjs install
mjs start
startjobmanager -name JobScheduler -remotehost hostname -v
startworker -jobmanagerhost hostname -jobmanager JobScheduler
             -remotehost hostname -v
```

Here, `hostname` is the host name of your computer. This is the host name that you specified in the file `mjs_def.bat` (Windows) or `mjs_def.sh` (Linux).

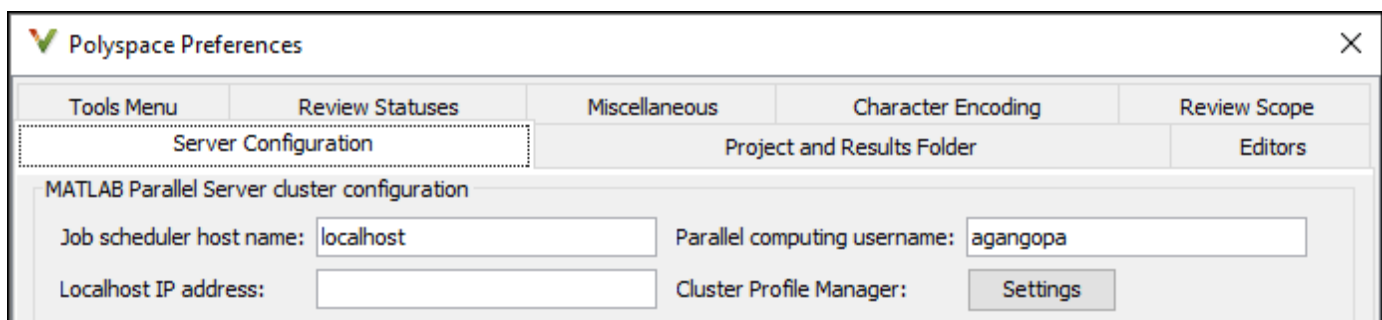
Instead of the command line, you can also start the services from the Admin Center interface. See “Install Products for Submitting Polyspace Analysis from Desktops to Remote Server” on page 2-12.

For more information on the commands, see “Configure Advanced Options for MATLAB Job Scheduler Integration” (MATLAB Parallel Server).

Configure Client

Open the user interface of the desktop product, Polyspace Bug Finder. Navigate to `polyspaceroot\polyspace\bin`, where `polyspaceroot` is the Polyspace desktop product installation folder, for instance, `C:\Program Files\Polyspace\R2021a` and double-click the `polyspace` executable.

Select **Tools > Preferences**. On the **Server configuration** tab, enter the host name of your computer for **Job scheduler host name**.



You are now set up for the server-client workflow.

Send Analysis from Client to Server

Run Bug Finder on the file `numerical.c` provided with your installation.

Before running these steps, to avoid entering full paths to the Polyspace executables, add the path `polyspaceroot\polyspace\bin` to the PATH environment variable on your operating system. Here `polyspaceroot` is the Polyspace desktop product installation folder, for instance, `C:\Program Files\Polyspace\R2021a`. To check if the path is already added, open a command line terminal and enter:

```
polyspace-bug-finder -h
```

If the path to the command is already added, you see the full list of options.

- 1 Copy the file `numerical.c` from `polyspaceroot\polyspace\examples\cxx\Bug_Finder_Example\sources` to a folder with write permissions.
- 2 Open a command terminal. Navigate to the folder where you saved `numerical.c` and enter the following:

```
polyspace-bug-finder -sources numerical.c -checkers numerical  
-results-dir . -batch -scheduler hostname
```

Here, *hostname* is the host name of your computer.

After compilation, the analysis is submitted to a server and returns a job ID. To run a Code Prover analysis, use `polyspace-code-prover` instead of `polyspace-bug-finder`. You can run the `polyspace-code-prover` command with a Polyspace Bug Finder license only, provided you use the `-batch` option.

- 3 See the status of the current job.

```
polyspace-jobs-manager listjobs -scheduler hostname
```

You can locate the current job using the job ID.

- 4 Once the job is completed, you can explicitly download the results.

```
polyspace-jobs-manager download -job jobID -results-folder .  
-scheduler hostname
```

Here, *jobID* is the job ID from the submission.

The results folder contains the downloaded results file (with extension `.psbf`). Open the results in the user interface of the desktop product, Polyspace Bug Finder.

See Also

More About

- “Install Products for Submitting Polyspace Analysis from Desktops to Remote Server” on page 2-12

- “Send Polyspace Analysis from Desktop to Remote Servers”
- “Send Polyspace Analysis from Desktop to Remote Servers Using Scripts”

Deploy Polyspace Bug Finder

Polyspace Products for Code Analysis and Verification

In this section...

“Using Polyspace Products in Software Development” on page 4-2

“Coordinating Pre-Submit and Post-Submit Usage of Polyspace” on page 4-4

“Polyspace Products for Ada Code” on page 4-4

Polyspace products use static analysis to check code for run-time errors, coding standard violations, security vulnerabilities, and other issues:

- A static analysis tool such as Polyspace Code Prover can cover all possible execution paths through a program and track data flow along these paths following certain mathematical rules. The exhaustive control and data flow analysis can complement dynamic testing and expose potential run-time errors that might not be otherwise found in regular robustness testing.
- A static analysis tool such as Polyspace Bug Finder can scan a program for more obvious run-time errors, security vulnerabilities, coding standard violations and other issues that potentially lead to run-time errors or unexpected results.

Using Polyspace Products in Software Development

The Polyspace suite of products supports all phases of a software development process:

- *Prior to code submission:*

Developers can run the Polyspace desktop or IDE-focused products to check their code during development or right before submission to meet predefined quality goals.

The products can be integrated into IDEs such as Visual Studio Code, Visual Studio, or Eclipse, or run with scripts during compilation. The analysis results can be reviewed in the IDEs or in the graphical user interface of the desktop products.

Polyspace provides the following products for desktop usage. These products are meant to run on complete projects or smaller code modules (upto a single source file).

- **Polyspace Bug Finder** to check code for semantic errors that a compiler cannot detect (such as use of = instead of ==), concurrency issues, security vulnerabilities and other defects in C and C++ source code. The analysis can also detect some run-time errors.
 - **Polyspace Code Prover** to perform a much deeper check and prove absence of overflow, divide-by-zero, out-of-bounds array access and other run-time errors in C and C++ source code.
- *After code submission:*

The Polyspace server products can run automatically on newly committed code as a build step in a continuous integration process (using tools such as Jenkins). The analysis runs on a server and the results are uploaded to a web interface for collaborative review.

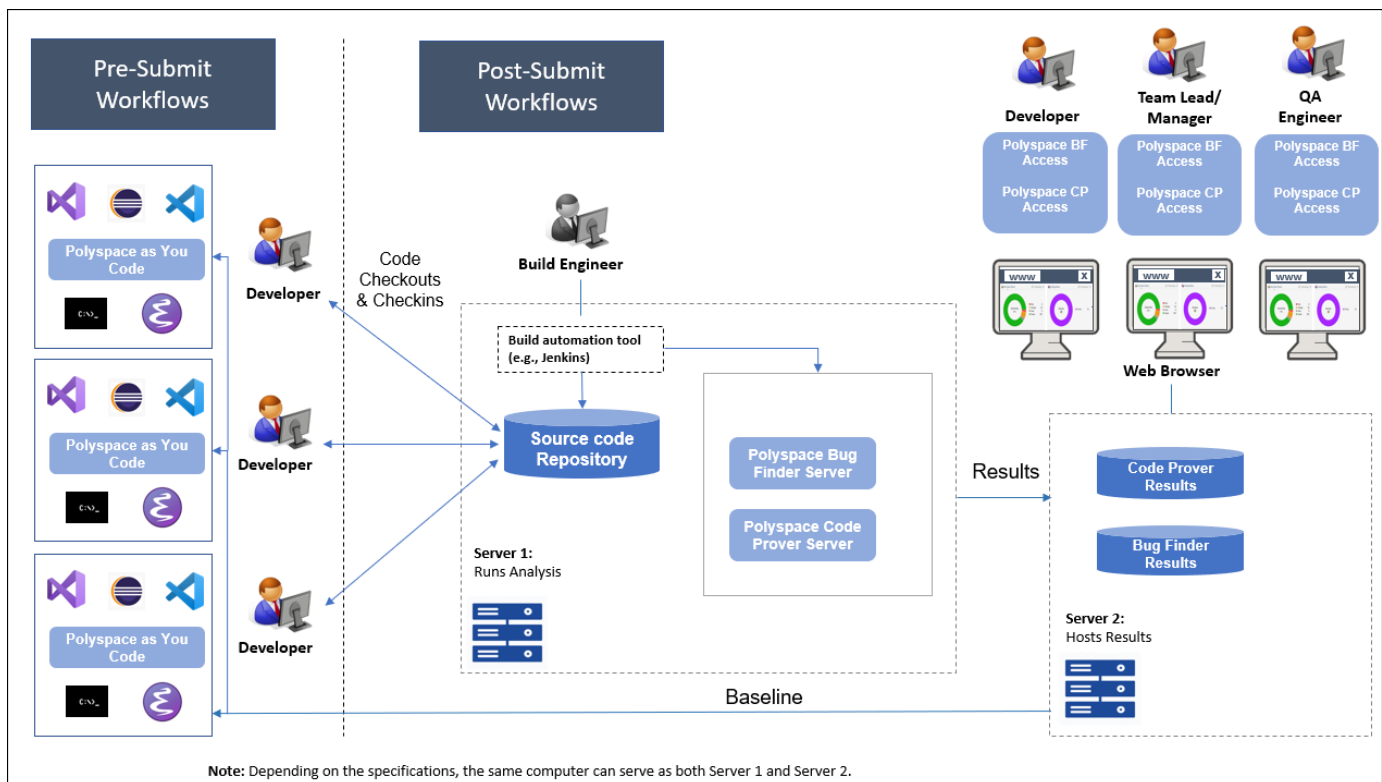
Polyspace provides these products for server usage:

- **Polyspace Bug Finder Server** to run Bug Finder automatically on a server and upload the results to a web interface for review, and **Polyspace Bug Finder Access** to review the uploaded results.
- **Polyspace Code Prover Server** to run Code Prover automatically on a server and upload the results to a web interface for review, and **Polyspace Code Prover Access** to review the uploaded results.

Typically, Polyspace Bug Finder Server (or Polyspace Code Prover Server) runs on a few build servers and checks newly committed code as part of software build and testing. Each reviewer (developer, quality assurance engineer or development manager) has a Polyspace Bug Finder Access (or Polyspace Code Prover Access) license to review the uploaded analysis results.

In addition, if developers have access to **Polyspace Bug Finder Access** for web review of post-submission results, they can also install **Polyspace as You Code** in their IDEs for pre-submission analysis. When installed as an IDE extension, Polyspace as You Code performs a file-scope Bug Finder-like analysis and provides near-instant feedback to developers while coding.

This diagram shows *one possible deployment* of Polyspace products.



When you use both the desktop and server products, your pre-submission workflow can transition smoothly to the post-submission workflow.

Coordinating Pre-Submit and Post-Submit Usage of Polyspace

When you run more than one Polyspace products at separate stages in your software development workflow, the later runs can benefit from the earlier usage, and vice versa. In particular:

- Developers using Polyspace as You Code in their IDEs can easily fix defects and coding standard violations that can be found and resolved within a single file. A later Polyspace Bug Finder Server analysis after code submission no longer shows these issues.
- The results of a Polyspace Bug Finder Server analysis can act as a baseline for Polyspace as You Code runs. Developers using the latest Polyspace Bug Finder Server result as baseline for their IDE runs can focus only on issues that result from their code changes.

Polyspace Products for Ada Code

Polyspace provides these products for verifying Ada code:

- **Polyspace Client™ for Ada** to check Ada code for run-time errors on a desktop.
- **Polyspace Server for Ada** to check Ada code for run-time errors on a server.

You can either use the desktop product to run the analysis on your desktop, or a combination of the desktop and server products to run the analysis on a server. The analysis results are downloaded to your desktop for review.

If you have a Polyspace Code Prover Access license and have set up the web interface of Polyspace Code Prover Access, you can upload each individual Ada result from the Ada desktop products to the web interface for collaborative review.

See also:

- <https://www.mathworks.com/products/polyspace-ada.html>
- <https://www.mathworks.com/products/polyspaceserverada/>

See Also

Related Examples

- “Install Polyspace Desktop Products” on page 2-2
- “Install and Manage Polyspace as You Code in IDEs” (Polyspace Bug Finder Access)
- “Install Polyspace Server and Access Products” (Polyspace Bug Finder Server)
- “Choose Between Polyspace Bug Finder and Polyspace Code Prover” on page 4-5

Choose Between Polyspace Bug Finder and Polyspace Code Prover

Polyspace Bug Finder and Polyspace Code Prover detect run-time errors through static analysis. Though the products have a similar user interface and the mathematics underlying the analysis can sometimes be the same, the goals of the two products are different.

Bug Finder (or Polyspace as You Code, which performs a single-file analysis similar to Bug Finder) quickly analyzes your code and detects many types of defects. Code Prover checks *every* operation in your code for a set of possible run-time errors and tries to prove the absence of the error for all execution paths¹. For instance, for *every* division in your code, a Code Prover analysis tries to prove that the denominator cannot be zero. Bug Finder does not perform such exhaustive verification. For instance, Bug Finder also checks for a division by zero error, but it might not find all operations that can cause the error.

The two products involve differences in setup, analysis and results review, because of this difference in objectives. In the following sections, we highlight the primary differences between a Bug Finder and a Code Prover analysis (also known as verification). Depending on your requirements, you can incorporate one or both kinds of analyses at appropriate points in your software development life cycle.

How Bug Finder and Code Prover Complement Each Other

- “Overview” on page 4-5
- “Faster Analysis with Bug Finder” on page 4-6
- “More Exhaustive Verification with Code Prover” on page 4-6
- “More Specific Defect Types with Bug Finder” on page 4-7
- “Easier Setup Process with Bug Finder” on page 4-7
- “Fewer Runs for Clean Code with Bug Finder” on page 4-8
- “Results in Real Time with Bug Finder” on page 4-8
- “More Rigorous Data and Control Flow Analysis with Code Prover” on page 4-8
- “Few False Positives with Bug Finder” on page 4-9
- “Zero False Negatives with Code Prover” on page 4-9

Overview

Use both Bug Finder and Code Prover regularly in your development process. The products provide a unique set of capabilities and complement each other. For possible ways to use the products together, see “Workflow Using Both Bug Finder and Code Prover” on page 4-10.

This table provides an overview of how the products complement each other. For details, see the sections below.

1. For each operation in your code, Code Prover considers all execution paths leading to the operation that do not have a previous error. If an execution path contains an error prior to the operation, Code Prover does not consider it. See “Code Prover Analysis Following Red and Orange Checks” (Polyspace Code Prover).

Feature	Bug Finder	Code Prover
Number of checkers	309	30 checks for critical run-time errors and 4 checks on global variable usage
Depth of analysis	Fast. For instance: <ul style="list-style-type: none"> • Faster analysis. • Easier set up and review. • Fewer runs for clean code. • Results in real time. 	Exhaustive. For instance: <ul style="list-style-type: none"> • All operations of a type checked for certain critical errors. • More rigorous data and control flow analysis.
Reporting criteria	Probable defects	Proven findings
Bug finding criteria	Few false positives	Zero false negatives

Faster Analysis with Bug Finder

How much faster the Bug Finder analysis is depends on the size of the application. The Bug Finder analysis time increases linearly with the size of the application. The Code Prover verification time increases at a rate faster than linear.

One possible workflow is to run Code Prover to analyze modules or libraries for robustness against certain errors and run Bug Finder at integration stage. Bug Finder analysis on large code bases can be completed in a much shorter time, and also find integration defects such as **Declaration mismatch** and **Data race**.

More Exhaustive Verification with Code Prover

Code Prover tries to prove the absence of:

- **Division by Zero** error on *every* division or modulus operation
- **Out of Bounds Array Index** error on *every* array access
- **Non-initialized Variable** error on *every* variable read
- **Overflow** error on *every* operation that can overflow

and so on.

For each operation:

- If Code Prover can prove the absence of the error for all execution paths, it highlights the operation in green.
- If Code Prover can prove the presence of a definite error for all execution paths, it highlights the operation in red.
- If Code Prover cannot prove the absence of an error or presence of a definite error, it highlights the operation in orange. This small percentage of orange checks indicate operations that you must review carefully, through visual inspection or testing. The orange checks often indicate hidden vulnerabilities. For instance, the operation might be safe in the current context but fail when reused in another context.

You can use information provided in the Polyspace user interface to diagnose the checks. See “More Rigorous Data and Control Flow Analysis with Code Prover” on page 4-8. You can also

provide contextual information to reduce unproven code even further, for instance, constrain input ranges externally.

Bug Finder does not aim for exhaustive analysis. It tries to detect as many bugs as possible and reduce false positives. For critical software components, running a bug finding tool is not sufficient because despite fixing all defects found in the analysis, you can still have errors during code execution (false negatives). After running Code Prover on your code and addressing the issues found, you can expect the quality of your code to be much higher. See “Zero False Negatives with Code Prover” on page 4-9.

More Specific Defect Types with Bug Finder

Code Prover checks for types of run-time errors where it is possible to mathematically prove the absence of the error. In addition to detecting errors whose absence can be mathematically proven, Bug Finder also detects other defects.

For instance, the statement `if (a=b)` is semantically correct according to the C language standard, but often indicates an unintended assignment. Bug Finder detects such unintended operations. Although Code Prover does not detect such unintended operations, it can detect if an unintended operation causes other run-time errors.

Examples of defects detected by Bug Finder but not by Code Prover include good practice defects, resource management defects, some programming defects, security defects, and defects in C++ object oriented design.

For more information, see:

- “Defects”: List of defects that Bug Finder can detect.
- “Run-Time Checks” (Polyspace Code Prover): List of run-time errors that Code Prover can detect.

Easier Setup Process with Bug Finder

Even if your code builds successfully in your compilation toolchain, it can fail in the compilation phase of a Code Prover verification. The strict compilation in Code Prover is related to its ability to prove the absence of certain run-time errors.

- Code Prover strictly follows the ANSI[®] C99 Standard, unless you explicitly use analysis options that emulate your compiler.

To allow deviations from the ANSI C99 Standard, you must use the “Target and Compiler” options. If you create a Polyspace project from your build system, the options are automatically set.

- Code Prover does not allow linking errors that common compilers can permit.

Though your compiler permits linking errors such as mismatch in function signature between compilation units, to avoid unexpected behavior at run time, you must fix the errors.

For more information, see “Troubleshoot Compilation and Linking Errors” (Polyspace Code Prover).

Bug Finder is less strict about certain compilation errors. Linking errors, such as mismatch in function signature between different compilation units, can stop a Code Prover verification but not a Bug Finder analysis. Therefore, you can run a Bug Finder analysis with less setup effort. In Bug Finder, linking errors are often reported as a defect after the analysis is complete.

Fewer Runs for Clean Code with Bug Finder

To guarantee absence of certain run-time errors, Code Prover follows strict rules once it detects a run-time error in an operation. Once a run-time error occurs, the state of your program is ill-defined and Code Prover cannot prove the absence of errors in subsequent code. Therefore:

- If Code Prover proves a definite error and displays a red check, it does not verify the remaining code in the same block.

Exceptions include checks such as **Overflow**, where the analysis continues with the result of overflow either truncated or wrapped around.

- If Code Prover suspects the presence of an error and displays an orange check, it eliminates the path containing the error from consideration. For instance, if Code Prover detects a **Division by Zero** error in the operation $1/x$, in the subsequent operation on x in that block, x cannot be zero.
- If Code Prover detects that a code block is unreachable and displays a gray check, it does not detect errors in that block.

For more information, see “Code Prover Analysis Following Red and Orange Checks” (Polyspace Code Prover).

Therefore, once you fix red and gray checks and rerun verification, you can find more issues. You need to run verification several times and fix issues each time for completely clean code. The situation is similar to dynamic testing. In dynamic testing, once you fix a failure at a certain point in the code, you can uncover a new failure in subsequent code.

Bug Finder does not stop the entire analysis in a block after it finds a defect in that block. Even with Bug Finder, you might have to run analysis several times to obtain completely clean code. However, the number of runs required is fewer than Code Prover.

Results in Real Time with Bug Finder

Bug Finder shows some analysis results while the analysis is still running. You do not have to wait until the end of the analysis to review the results.

Code Prover shows results only after the end of the verification. Once Bug Finder finds a defect, it can display the defect. Code Prover has to prove the absence of errors on all execution paths. Therefore, it cannot display results during analysis.

More Rigorous Data and Control Flow Analysis with Code Prover

For each operation in your code, Code Prover provides:

- Tooltips showing the range of values of each variable in the operation.

For a pointer, the tooltips show the variable that the pointer points to, along with the variable values.

- Graphical representation of the function call sequence that leads to the operation.

By using this range information and call graph, you can easily navigate the function call hierarchy and understand how a variable acquires values that lead to an error. For instance, for an **Out of Bounds Array Index** error, you can find where the index variable is first assigned values that lead to the error.

When reviewing a result in Bug Finder, you also have supporting information to understand the root cause of a defect. For instance, you have a traceback from where Bug Finder found a defect to its

root cause. However, in Code Prover, you have more complete information, because the information helps you understand all execution paths in your code.

```

167 static void Square_Root_conv(double alpha, float* beta_pt)
168 /* Perform arithmetic conversion of alpha to beta */
169 {
170     *beta_pt = (float)((1.5 + cos(alpha)) / 5.0);
171 }
172
173
174 stati
175 {
176     d
177     f
178     f
179
180     Square_Root_conv(alpha, &beta);
181
182     gamma = (float)sqrt(beta - 0.75); /* always sqrt(negative number) */
183 }

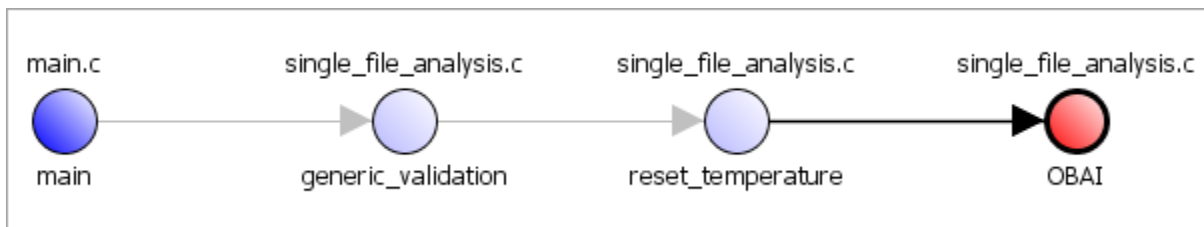
```

Dereference of parameter 'beta_pt' (pointer to float 32, size: 32 bits):
 Pointer is not null.
 Points to 4 bytes at offset 0 in buffer of 4 bytes, so is within bounds (if memory is allocated).
 Pointer may point to variable or field of variable:
 'beta', local to function 'Square_Root'.

Assignment to dereference of parameter 'beta_pt' (float 32): [0.1 .. 0.5]

Press 'F2' for focus

Data Flow Analysis in Code Prover



Control Flow Analysis in Code Prover

Few False Positives with Bug Finder

Bug Finder aims for few false positives, that is, results that you are not likely to fix. By default, you are shown only the defects that are likely to be most meaningful for you.

Bug Finder also assigns an attribute called impact to the defect types based on the criticality of the defect and the rate of false positives. You can choose to analyze your code only for high-impact defects. You can also enable or disable a defect that you do not want to review².

Zero False Negatives with Code Prover

Code Prover aims for an exhaustive analysis. The software checks every operation that can trigger specific types of error. If a code operation is green, it means that the operation cannot cause those run-time errors that the software checked for³. In this way, the software aims for zero false negatives.

2. You can also disable certain Code Prover defects related to non-initialization.

If the software cannot prove the absence of an error, it highlights the suspect operation in red or orange and requires you to review the operation.

Workflow Using Both Bug Finder and Code Prover

If you have both Bug Finder and Code Prover, based on the above differences, you can deploy the two products appropriately in your software development workflow. For instance:

- All developers in your organization can run Bug Finder on newly developed code. For maintaining standards across your organization, you can deploy a common configuration that looks only for specific defect types.

Code Prover can be deployed as part of your unit testing suite.

- You can run Code Prover only on critical components of your project, while running Bug Finder on the entire project.
- You can run Code Prover on modules of code at the unit testing level, and run Bug Finder when integrating the modules.

You can run Code Prover before unit testing. Code Prover exhaustively checks your code and tries to prove the presence or absence of errors. Instead of writing unit tests for your entire code, you can then write tests only for unproven code. Using Code Prover before unit testing reduces your testing efforts drastically.

Depending on the nature of your software development workflow and available resources, there are many other ways you can incorporate the two kinds of analysis. You can run both products on your desktop during development or as part of automated testing on a remote server. Note that it is easier to interpret and fix bugs closer to development. You will benefit from using both products if you deploy them early and often in your development process.

There are two important considerations if you are running both Bug Finder and Code Prover on the same code.

- Both products can detect violations of coding rules such as MISRA C rules and JSF[®] C++ rules.

However, if you want to detect MISRA C:2012 coding rule violations alone, use Bug Finder. Bug Finder supports all the MISRA C:2012 coding rules. Code Prover does not support a few rules.

- If a result is found in both a Bug Finder and Code Prover analysis, you can comment on the Bug Finder result and import the comment to Code Prover.

For instance, most coding rule checkers are common to Bug Finder and Code Prover. You can add comments to coding rule violations in Bug Finder and import the comments to the same violations in Code Prover. To import comments, open your result set and select **Tools > Import Comments**.

- You can use the same project for both Bug Finder and Code Prover analysis. The following set of options are common between Bug Finder and Code Prover:
 - “Target and Compiler”
 - “Macros”
 - “Environment Settings”

3. The Code Prover result holds only if you execute your code under the same conditions that you supplied to Code Prover through the analysis options.

- “Inputs and Stubbing”
- “Multitasking”
- “Coding Standards & Code Metrics”
- “Reporting”, except Bug Finder and Code Prover report (-report-template)

You might have to change more of the default options when you run the Code Prover verification because Code Prover is stricter about compilation and linking errors.

